

Loma Linda University School of Medicine

DOCTOR OF MEDICINE PROGRAM



LOMA LINDA
UNIVERSITY

School of Medicine



OUR MISSION

To continue the teaching and
healing ministry of Jesus Christ

OUR MOTTO

To Make Man Whole



From the Deans



TAMARA THOMAS, MD
Dean

Thank you for your interest in Loma Linda University School of Medicine. Our school was founded in 1909 as the College of Medical Evangelists, and is a private, Seventh-day Adventist medical school, fully accredited by the Western Association of Schools and Colleges (WASC) and the Liaison Committee on Medical Education (LCME).

Our school offers the highest quality medical education for medical and MD/PhD students. At Loma Linda University School of Medicine, we teach our students to contribute to a spirit of inquiry and to minister to the physical, mental, emotional and spiritual needs of individuals, families and communities around the globe. We strive to create an environment of wholeness and resilience for our faculty and students.

Our faculty is committed to ensuring that those we educate will develop the knowledge, skills, values and competencies necessary to become a compassionate, ethical and caring physician.

We provide whole person care and medical education to the world community, and create opportunities for professional interaction with worldwide physicians and scientists.

If you are passionate about serving others while delivering whole person care as a physician, we welcome your interest in Loma Linda University School of Medicine.

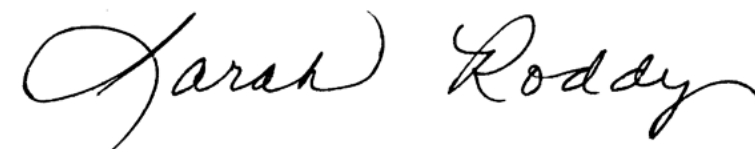
May God richly bless your pursuit of medical education.



For more than a hundred years our medical students have been educated in a supportive Christian environment of excellence and caring. Our educational process has followed the best practices of medical education throughout its history and at the same time has held true to its original mission, "to continue the teaching and healing ministry of Jesus Christ 'to make man whole.'"

Clinical education experiences are incorporated into the basic science years to begin the formation of medical professionalism in our students. Our curriculum uses the organ systems approach to the mastery of the biomedical sciences crucial to medical practice. Our instructional methods are an effective blend of lectures, small-group sessions and problem-based learning. We have state-of-the-art educational facilities, including technologically advanced amphitheatres and anatomy laboratory. A modern medical simulation center enables students to learn, practice and be tested on medical procedures in a safe, educationally progressive, simulated hospital environment. Behind the up-to-date pedagogy and instructional equipment are professors who are truly invested in the success of their students, both professionally and personally. Our curriculum and environment are distinctively Christian, emphasizing a holistic approach to medical care.

Loma Linda University School of Medicine seeks applicants who have demonstrated by life experiences that their own personal mission is consistent with the School of Medicine. If you are someone with strong academics and wish to join in this mission, we invite you to consider Loma Linda University School of Medicine as the ideal place to prepare for a career in medical service.



SARAH RODDY, MD
Associate Dean for Admissions and Recruitment



Click here to watch a virtual tour of the School of Medicine.

Why Choose Loma Linda University School of Medicine?

For over 113 years, **Loma Linda University's School of Medicine has trained over 11,000 skilled physicians** who are well-grounded in both the sciences and art of medicine.

It is our goal to prepare students with a solid foundation of medical knowledge that will assist in the attainment of professional skills, and to motivate investigative curiosity and a desire to participate in the advancement of knowledge.

As a faith-based institution, our purpose is to train our graduates to apply Christian principles in their service to humanity.

At-A-Glance

- ▶ Clinical rotations at the **new, state-of-the-art adult and children's hospitals** on campus and at area hospitals.
- ▶ **Service-learning opportunities** combine academic preparation, collaborative relationships, community/global engagement and critical reflection.
- ▶ **Regional campuses** will be offered at Kettering Health and AdventHealth Orlando.
- ▶ The community of **Loma Linda is designated a Blue Zone**, one of the five places in the world where residents live significantly longer than other people.

Our Core Values

Compassion

Reflects the love of God with respect, mercy and empathy.

Excellence

Exceeds expectations with effectiveness, reliability and efficiency.

Humility

Puts self-importance aside for the greater good of others.

Integrity

Carries out actions with honesty and trustworthiness.

Justice

Commits to diversity, equity and inclusion.

Teamwork

Collaborates to achieve a shared purpose.

Wholeness

Loved by God, growing in health, living with purpose in community.

Developing the Whole Person

The Christian view of wholeness holds that **the needs of patients go beyond the healing of the body**, and that **the development of students involves more than the training of the mind**.

We are dedicated to promoting physical, intellectual, social and spiritual growth in our faculty and students, and to transforming our daily activities into personal ministries.

Our mission permeates our educational process, with courses that approach medical ethics and decision making from a Christian perspective and clinicians who model caring professionalism.

Reaching the World

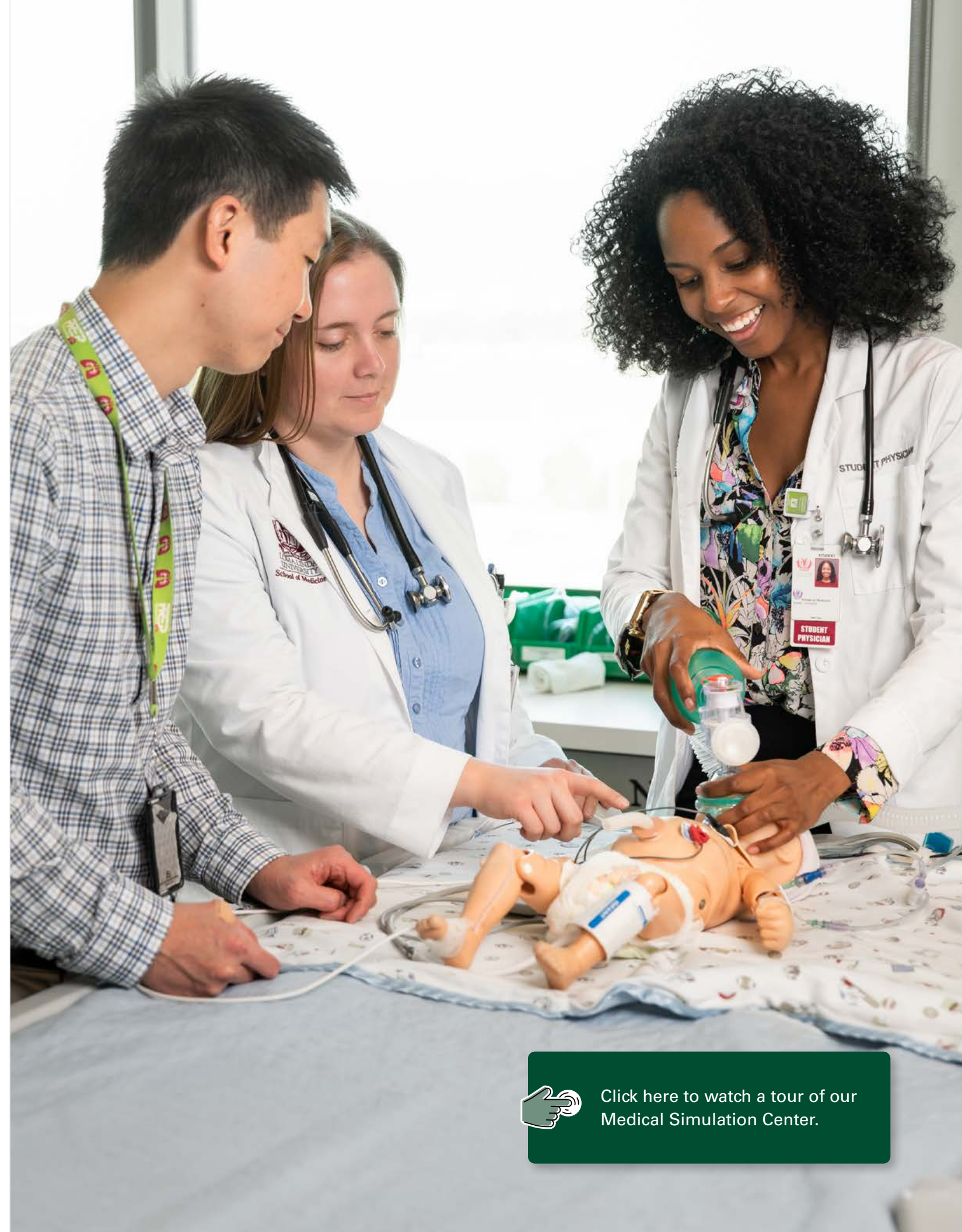
Providing whole person care wherever the opportunity arises; participating with the world community in the provision of local medical education; providing international physicians and scientists the opportunities for professional interaction and enrichment; sharing the good news of a loving God as demonstrated by the life and teachings of Jesus Christ—these are the goals of the students, faculty, and graduates of the School of Medicine.

Cutting Edge Medical Education

Our **Medical Simulation Center** is a premier healthcare simulation program that supports, develops and provides quality simulation education.

Learning occurs in a virtual hospital setting, as well as in a virtual trainer room utilizing virtual reality (VR) technology, with simulated training areas designed to reflect the realities encountered in actual care and community settings.

At the **Clinical Skills Education Center**, students have an opportunity to integrate knowledge, clinical skills and professionalism in a realistic simulated clinical setting, utilizing standardized patients and a variety of medical simulation modalities. Clinicians and educators partner to create innovative learning experiences and evaluations.



Click here to watch a tour of our Medical Simulation Center.



Preparing the Physician

Our overriding purpose is the formation of Christian physicians, educated to serve as generalists or specialists, providing whole person care to individuals, families and communities.

Education

Creating an environment in which medical students, graduate students and residents will acquire the knowledge, skills, values and attitudes appropriate to Christian physicians and scholars.

Research

Cultivating an atmosphere of inquiry and discovering new routes to wholeness through basic and clinical research.

Service

Ministering to the physical, mental, emotional and spiritual needs of patients in a timely and cost-effective fashion with due regard for their privacy, dignity and valid consent; providing diagnostic and therapeutic services in primary and tertiary care settings to patients of all ages, races, religions and socioeconomic backgrounds.

Empowering Success

The School of Medicine offers career advising and professional development programs throughout the four years of medical school. As a small private institution, students find that our faculty physicians (many of whom are alumni) want to support and mentor their students in acquiring the skills and knowledge needed to become competent and compassionate physicians.

Choosing a Specialty

During the course of medical school, choosing a specialty is a significant decision, and navigating the process of getting into residency can seem like a daunting task. The School of Medicine has over 25 specialty interest groups ranging from dermatology to general surgery to pediatrics to urology.

The interest groups are a forum for students to organize professional, educational and research activities related to a specialty. Each interest group is overseen by a faculty advisor to provide support and leadership training, orient the students in the specialty field and help guide students through various aspects of residency application.

Learning Integration Formation Experience (LIFE) Communities

The School of Medicine's LIFE Communities Program provides all medical students with a community of students and a faculty coach for support and connection throughout medical school. This program facilitates the development of safe, significant relationships and a sense of community with faculty and peers while enabling each student to develop their unique professional identity and self-efficacy rooted in Christ to find meaning within their academic, spiritual and personal life.



An Academic Medical Campus

Loma Linda University Health is the umbrella organization encompassing Loma Linda University's eight professional schools, six hospitals, remote clinics in the western United States, affiliate organizations around the world, and more than 900 faculty physicians to help students succeed in their career in medicine.

Loma Linda University is comprised of the Schools of Allied Health Professions, Behavioral Health, Dentistry, Medicine, Nursing, Pharmacy, Public Health and Religion. Many nations of the world are represented among the more than 4,600 students enrolled.

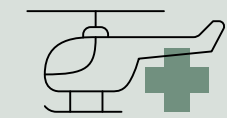
Loma Linda University School of Medicine faculty are attending physicians and are engaged in cutting-edge research in a variety of fields, including perinatal biology, neuroscience, health disparities, infectious disease and cancer.

Did you know?

Loma Linda University will offer regional campuses for clinical rotations.

Students can choose to rotate for the third and fourth year of medical school at Kettering Health in Dayton, Ohio and AdventHealth Orlando in Orlando, Florida. This is a unique opportunity to train in a region of the country where a student has ties and/or desires to practice during their future career. Graduates from the regional campuses will receive a combined degree from the Loma Linda University School of Medicine and the regional campus.

Loma Linda University Health features:



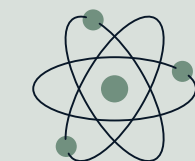
The region's only Level I trauma center



The region's only children's hospital



Home to the world's first successful infant heart transplant



Home to the world's first hospital-based proton treatment center for cancer



Click here to watch a video of our new medical campus where students gain clinical experience.

Campus Life

We are committed to providing our students with **opportunities for a well-balanced life**. Our students enjoy access to state-of-the-art workout and sports facilities, housing on and off campus, opportunities to enhance their spiritual life through worship, mission service and ministry opportunities.

University Spiritual Care

As a Christian institution of higher education, students attend chapel weekly which is a critical component of the educational experience at Loma Linda University. We emphasize the value it places on spiritual development, corporate worship, and community. There are a variety of spiritual events that are held including vespers, renewal weeks and other resource programs that integrate faith and learning.

Drayson Center

Located on campus, the Drayson Center is a wellness center dedicated to the spirit of wholeness. The Center promotes physical, emotional and spiritual well-being through exercise and recreation classes, aquatics, basketball, racquetball, weight room and fitness center, intramurals and a variety of health and wellness programming.

Annual Student and Faculty Retreat

An opportunity to connect and spend time with other medical students and faculty members in a beautiful and relaxed mountain setting. The Pine Springs Retreat offers spiritual programs with a guest speaker as well as praise teams coordinated by student representatives from all four years.

Diversity

Loma Linda University School of Medicine is building upon the strengths that come from our diversity. We believe diversity is essential to excellence and that the elimination of health disparities is paramount to enhancing health in a diverse population.

A variety of active student groups are available at Loma Linda University including the African Network (AfriNet); the Association of Latin American Students (ALAS); the Black Health Professional Student Association (BHPSA) and the Student National Medical Association (SNMA).



What Our Students Are Saying



Loma Linda University School of Medicine provides students and faculty with the opportunity to learn and work in a **diverse range of care settings**.

—Gabriel Martin, Class of 2022

The faculty are dedicated to teaching and helping us to become excellent physicians who will treat our patients with **whole person care**.

—Serena Lin, Class of 2023



One of the reasons that I chose Loma Linda University was the community aspect that it offers. There is a **built-in support system** where **students collaborate and learn** together.

—Alexis Townsend, Class of 2025



Local and Global Community Service

Join our commitment to selfless service for humankind with mission-focused learning opportunities.

Healthy Neighborhoods Project

The Healthy Neighborhood Project (HNP) is a student-run initiative, composed of multiple programs which address the health, educational, physical, emotional and spiritual needs of the San Bernardino community which includes:

Street Medicine

Homeless populations of San Bernardino receive free and high quality transitional care under the supervision of university health services providers.

Project Hope

Expectant teen parents are paired up with mentors to participate in health and parent education, crafts and hands-on activities at various high schools.

Students for International Mission Service (SIMS)

Students for International Mission Service (SIMS) exemplifies the **university's commitment to global service**. International volunteer service opportunities are available during the summer following the freshman year and are also incorporated into the senior year academic curricula. Participants work around the globe in underdeveloped communities that have limited or no access to healthcare and health education. The School of Medicine and School of Medicine Alumni Association assist with a portion of travel costs for SIMS trips of a month or more in length.

Medical students played a crucial role in the distribution of COVID-19 vaccines in San Bernardino County by administering thousands of vaccines to patients from throughout the region.



Medical School Milestone Moments

White Coat Ceremony

On this special occasion, first-year medical students gather before their families, friends and faculty inside Loma Linda University Church to receive white coats that symbolize the beginning of their journey as future physicians.

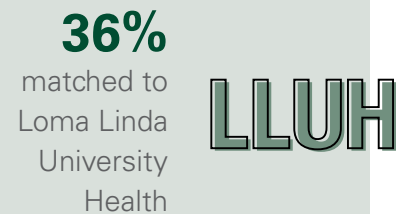
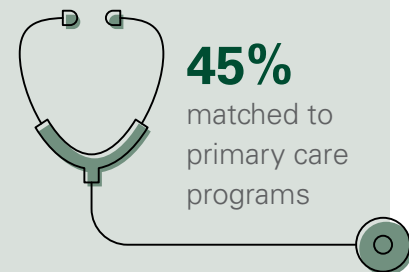


Match Day

For fourth-year medical students, Match Day is the moment when their lofty aspirations solidify into reality. They will embark as resident physicians to hospitals throughout the United States.

As our graduates begin to leave footprints around the world, we are proud of their achievements and confident that they are prepared to deliver whole person care to patients in need.

Match Day Stats*



*2018-2022 average Match Day stats

Curriculum Overview

The Discovery Curriculum equips students to provide outstanding whole person care in a changing healthcare environment, utilizing technology and principles from the science of learning to enhance student education.

In the first two years, students learn the foundational principles essential to the practice of medicine as part of an integrated organ systems block curriculum, which combines basic and clinical science knowledge and skills development. Instructional methods include a variety of active learning modalities in addition to lectures that seek to engage students in the learning process. The second year concludes with integrative case reviews and several weeks of dedicated study time in preparation for USMLE Step 1.

Clinical skills development and professional identity formation are taught longitudinally throughout all four years of medical education. Professional identity formation is supported by Learning Integration Formation Experience (LIFE) Communities that pair small groups of students with faculty mentors; these communities deliver portions of the curriculum, participate in service learning, and provide support and feedback to students through all four years of medical education.

In the third year, students rotate through core clerkship experiences organized into primary

care (family medicine, internal medicine and pediatrics) and neuro-psychiatry/surgical specialties (general surgery, obstetrics and gynecology and neurology/psychiatry). Intersession weeks throughout the third year provide opportunities for students to engage as a class and focus on a variety of topics integral to medicine, including ethics, applied religion, lifestyle and preventive medicine, patient safety, radiology, resiliency, social determinants of health and delivery of whole person care. USMLE Step 2 is taken following completion of the junior curriculum.

The senior year provides capstone experiences in the required sub-internship, intensive care, emergency medicine and preventive medicine/public health clerkships. Students also complete a two-week selective in basic science and a four-week selective in a subspecialty of medicine, pediatrics or surgery. Eighteen weeks are available for students to choose additional areas of interest for study. LIFE Communities in the senior year focus on supporting students through the residency application process and preparing students for the rigors of residency.

At-A-Glance:

- ▶ Integrated organ systems curriculum
- ▶ Christian Physician Formation
- ▶ Clinical Skills Development
- ▶ Special laboratory sessions
- ▶ Advanced integration weeks
- ▶ Use of simulations and standardized patients
- ▶ Emphasis on student choice
- ▶ Certificate programs offered
- ▶ Religion

Affiliated Hospital and Institutions: Clinical Rotations

- ▶ Loma Linda University Medical Center, Children's Hospital, Surgical Hospital, Behavioral Medicine Center
- ▶ VA Loma Linda Healthcare System
- ▶ Riverside University Health System
- ▶ Adventist Health White Memorial in Los Angeles
- ▶ Kettering Health Main Campus in Ohio
- ▶ AdventHealth Orlando in Florida
- ▶ and more

Did you know?

The Medical Scientist Program is available for those who want to pursue a PhD and MD degrees.

Students who are energized by the performance of biomedical research and wish to pursue a career in academic medicine may consider earning both the PhD and MD degrees through the Medical Scientist Program (MSP). This program is designed to develop a student's independence and competence as an investigative scientist by providing a broad educational base for the practice of medicine and medically-related research.



Organ Systems Block Curriculum

Freshman Year

Orientation (3 DAYS)	Foundations 1 (9 WEEKS)	Selective (2 WEEKS)	Foundations 2, GI & Liver (8 WEEKS)	CPF Integration (1 WEEK)	Christmas Break (2 WEEKS)	Hematology & Immunology (5 WEEKS)	Endocrine and Reproductive (6 WEEKS)	Clinical Experience (2 WEEKS)	Spring Break (1 WEEK)	Cardiovascular (6 WEEKS)	Pulmonary (4 WEEKS)	NBME Customized Exam	Summer Break (9 WEEKS)
----------------------	-------------------------	---------------------	-------------------------------------	--------------------------	---------------------------	-----------------------------------	--------------------------------------	-------------------------------	-----------------------	--------------------------	---------------------	----------------------	------------------------

LONGITUDINAL COURSES: Christian Physician Formation (CPF), Clinical Skills Development, Religion

Sophomore Year

Neuroscience & Human Behavior (9 WEEKS)	Clinical Experience (2 WEEKS)	Renal & Urinary (5 WEEKS)	Selective (2 WEEKS)	Christmas Break (2 WEEKS)	Musculoskeletal & Skin (4 WEEKS)	Application & Integration (6 WEEKS)	Dedicated Board Preparation and/or Vacation Time (6 WEEKS)	Junior Orientation (1 WEEK)
---	-------------------------------	---------------------------	---------------------	---------------------------	----------------------------------	-------------------------------------	--	-----------------------------

LONGITUDINAL COURSES: CPF, Clinical Skills Development, Religion



Click here to visit our course catalog for more info on curriculum requirements.

Junior Year*

First Half			Second Half				
Block 1 (8 weeks)	Block 2 (8 weeks)	Advanced Integration Week 1	Block 3 (8 weeks)	Block 4 (8 weeks)	Block 5 (8 weeks)	Advanced Integration Week 2	Block 6 (8 weeks)
Pediatrics	Internal Medicine		Family Medicine/ Elective	Neurology/ Psychiatry	Surgery		OB/GYN/Elective

Senior Year

Sub-Internship (4 WEEKS)	Intensive Care (4 WEEKS)	Prev Medicine/Public Health (4 WEEKS)	Selective (4 WEEKS)	Emergency Care (2 WEEKS)	Electives (14 WEEKS)
--------------------------	--------------------------	---------------------------------------	---------------------	--------------------------	----------------------

*Partial year shown. Students rotate through these subject blocks in different orders.

How to Apply

Application Process

The application process consists of an American Medical College Application Service (AMCAS) application, an LLUSM secondary application, and letters of recommendation. There are application fees for both the AMCAS and secondary applications. An MCAT score is required to complete the application process. MCAT scores older than three years prior to the anticipated matriculation date are not accepted.


Selection Criteria

The number of applicants is far greater than the number of positions we have to offer; thus, admission is highly selective and competitive within each year's applicant pool.

Applicants must demonstrate competence in the basic sciences regardless of their major field of study. No preference is given to either science or non-science majors. Applicants are expected to complete a bachelor's degree at an accredited college or university in the United States or Canada prior to entrance into medical school.

From the applicant pool, the Admissions Committee selects as students those who have demonstrated a serious personal commitment to the practice of medicine and have altruistic goals and ideals. The Committee selects students based on a holistic review of the academic record, MCAT scores, medical and service experiences, leadership, mission fit, recommendations, interpersonal and intrapersonal competencies, and personal interviews.

The School of Medicine is owned and operated by the Seventh-day Adventist Church; therefore, preference for admission is given to qualified members of the Church. However, applicants from other faiths who have demonstrated a commitment to Christian principles and who are best suited to meet the educational goals of the School are admitted each year.



Click here to visit our website for admission requirements, tuition rates, and application process.

International Applicants

Prior to applying for admission, international students are required to complete a minimum of one year of study, which includes our required courses, at an accredited U.S. or Canadian college or university. Academic competitiveness and proficiency in spoken and written English must also be demonstrated.

Early Decision Program

In the Early Decision Program, applicants review medical schools and decide which medical school would best meet their educational goals. Likewise, medical schools seek highly-qualified applicants who meet their mission for this program.

Expenses

As a private institution, state residency is not a determinant in tuition rates. The same tuition rates apply to international students.



LOMA LINDA
UNIVERSITY
School of Medicine

Office of Admissions, Loma Linda University School of Medicine
11175 Campus Street, Room 11107 | Loma Linda, CA 92350

909-558-4467 | admissions.sm@llu.edu
medicine.llu.edu/admissions/medicine-md-program

