

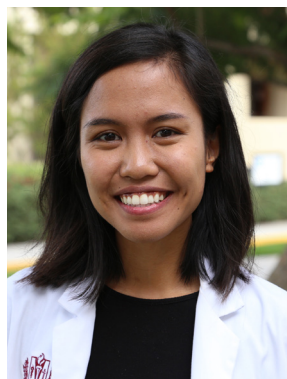
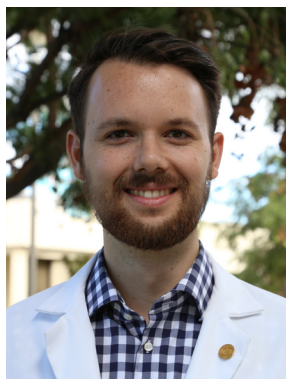
LOMA LINDA UNIVERSITY SCHOOL OF MEDICINE

# DOCTOR of MEDICINE

PROGRAM



LOMA LINDA  
UNIVERSITY  
School of Medicine





# FROM *the* DEANS

## Tamara Thomas, MD

*Dean*

Thank you for your interest in Loma Linda University School of Medicine (LLU School of Medicine). LLU School of Medicine, founded in 1909 as the College of Medical Evangelists, is a private, Seventh-day Adventist medical school, fully accredited by the Western Association of Schools and Colleges (WASC) and the Liaison Committee on Medical Education (LCME).

Our school offers the highest quality medical education for medical and MD/PhD students. At LLU School of Medicine, we teach our students to contribute to a spirit of inquiry and to minister to the physical, mental, emotional and spiritual needs of individuals, families and communities around the globe. We strive to create an environment of wholeness and resilience for our faculty and students. Our faculty is committed to ensuring that those we educate will develop the knowledge, skills, values and competencies appropriate for faith-based physicians and scholars.

Providing whole person care and medical education to the world community, creating opportunities for professional interaction with worldwide physicians and scientists, sharing the good news of a loving God as demonstrated by the life and teachings of Jesus Christ — these are the goals of the students, faculty and graduates of the School of Medicine.

If you are passionate about serving others while delivering whole person care as a physician, we welcome your interest in LLU School of Medicine.

May God richly bless your pursuit of medical education.



## Sarah Roddy, MD

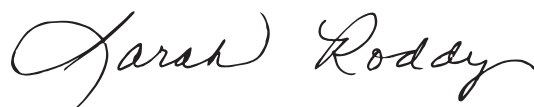
*Associate Dean,  
Admissions and Recruitment*

For more than a hundred years our medical students have been educated in a supportive Christian environment of excellence and caring.

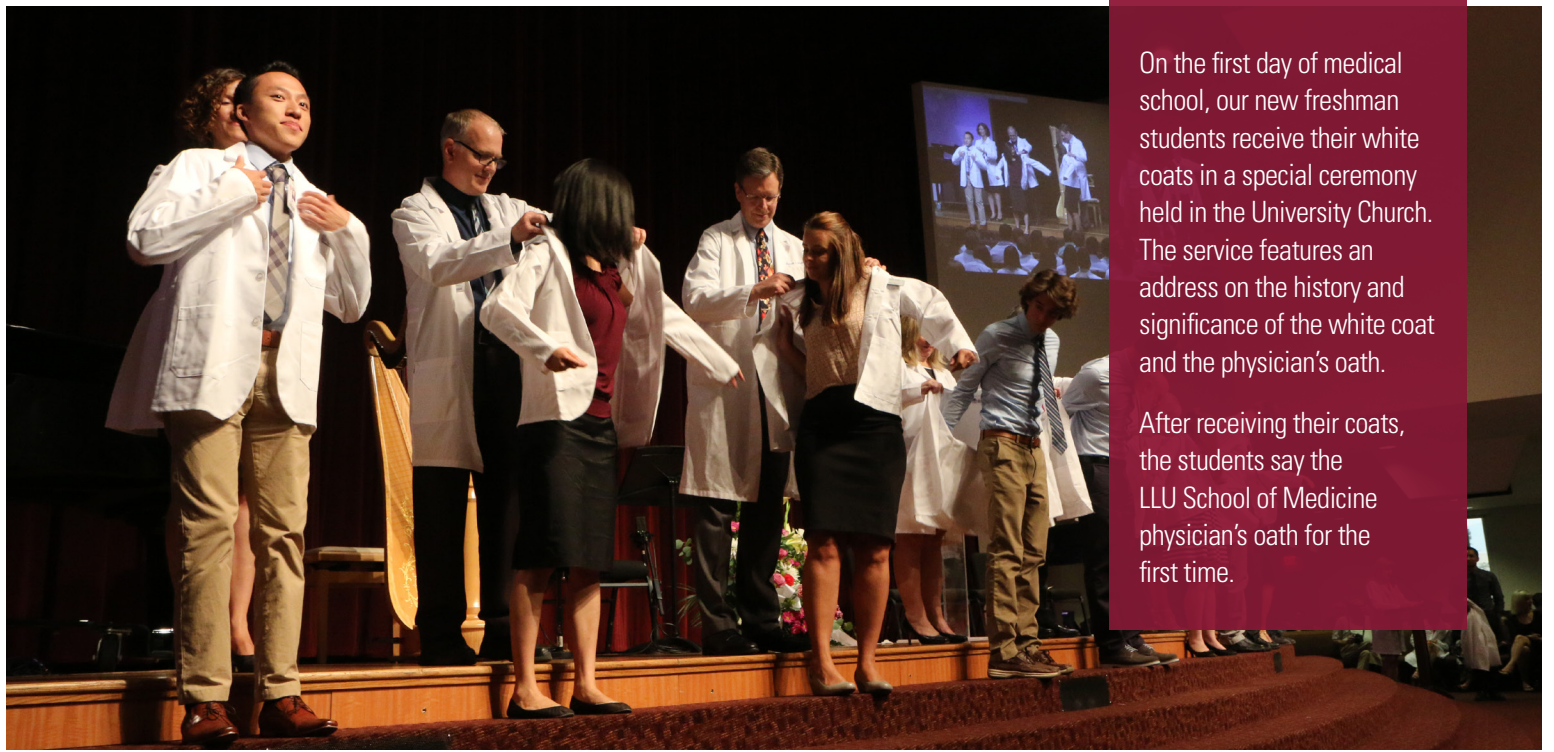
Our educational process has followed the best practices of medical education throughout its history and at the same time has held true to its original mission, "to continue the teaching and healing ministry of Jesus Christ 'to make man whole.'"

Clinical education experiences are incorporated into the basic science years to begin the formation of medical professionalism in our students. Our curriculum uses the organ systems approach to the mastery of the biomedical sciences crucial to medical practice. Our instructional methods are an effective blend of lectures, small-group sessions and problem-based learning. We have state-of-the-art educational facilities, including technologically advanced amphitheaters and anatomy laboratory. A modern medical simulation center enables students to learn, practice and be tested on medical procedures in a safe, educationally progressive, simulated hospital environment. Behind the up-to-date pedagogy and instructional equipment are professors who are truly invested in the success of their students, both professionally and personally. Our curriculum and environment are distinctively Christian, emphasizing a holistic approach to medical care.

Loma Linda University School of Medicine seeks applicants who have demonstrated by life experiences that their own personal mission is consistent with the School of Medicine. If you are someone with strong academics and wish to join in this mission, we invite you to consider Loma Linda University School of Medicine as the ideal place to prepare for a career in medical service.







On the first day of medical school, our new freshman students receive their white coats in a special ceremony held in the University Church. The service features an address on the history and significance of the white coat and the physician's oath.

After receiving their coats, the students say the LLU School of Medicine physician's oath for the first time.



Senior LLU School of Medicine medical students are required to complete a Critical Events course. During this interprofessional course, medical students work with students from the other Loma Linda University schools to respond to a simulated natural disaster or terrorism event, both at the scene and in the emergency room.





# ABOUT LOMA LINDA UNIVERSITY HEALTH

**LOMA LINDA UNIVERSITY HEALTH** is the umbrella organization encompassing Loma Linda University's eight professional schools, Loma Linda University Medical Center's six hospitals and more than 900 faculty physicians located across the Inland Empire in Southern California. Since opening its doors to patients and students in 1905, Loma Linda University Health has become a national healthcare leader in education, research and clinical care.

Loma Linda University is comprised of the Schools of Allied Health Professions, Behavioral Health, Dentistry, Medicine, Nursing, Pharmacy, Public Health and Religion. Many nations of the world are represented among the more than 4,600 students enrolled.

Faculty within the Loma Linda University School of Medicine are engaged in cutting-edge research in a variety of fields, including perinatal biology, neuroscience, health disparities, infectious disease and cancer. Medical students have the opportunity to engage in the process of discovery at several points during their education, including the summer between years one and two, as well as during electives.

With over 1,000 beds, the not-for-profit Loma Linda University Medical Center is the flagship healthcare institution of the Seventh-day Adventist Church. The comprehensive health system includes:

- The region's only Level I trauma center
- The region's only children's hospital
- LLU Behavioral Health Center
- LLU Surgical Hospital
- LLU Medical Center – East Campus
- LLU Medical Center – Murrieta
- Multiple Loma Linda University Health centers and clinics located throughout San Bernardino and Riverside counties

Loma Linda University Health is the site of the world's first successful newborn heart recipient transplant as well as the world's first hospital-based proton treatment center for cancer.





# ABOUT *the* SCHOOL of MEDICINE

**THE MAJOR OBJECTIVE** of the School of Medicine is to prepare students who are well-grounded in both the science and art of medicine. It is the school's goal to prepare students with a solid foundation of medical knowledge that will assist them in the attainment of professional skills, and to motivate investigative curiosity and a desire to participate in the advancement of knowledge. It is the school's purpose to train its graduates to apply Christian principles in their service to mankind.



Hands-on ultrasound training is incorporated each year of the LLU School of Medicine medical curriculum, across a variety of specialties. Point-of-care ultrasound can be performed at the patient's bedside within minutes and gives the physician a tremendous amount of potential life-saving information.

## Clinical Skills Education Center

At the Clinical Skills Education Center students have an opportunity to integrate knowledge, clinical skills and professionalism in a realistic simulated clinical setting, utilizing standardized patients and a variety of medical simulation modalities. Clinicians and educators partner to create innovative learning experiences and evaluations.

## Medical Simulation Center

The Medical Simulation Center is a premier healthcare simulation program that supports, develops and provides quality simulation education; in doing so, seeks to promote safe healthcare; and reflects best practices in healthcare and interprofessional education.

## Drayson Center

The Drayson Center, located on campus, is a wellness center dedicated to the spirit of wholeness. The Center promotes physical, emotional and spiritual well-being through exercise and recreation classes, aquatics, basketball, racquetball, weight room and fitness center, intramurals and a variety of health and wellness programming.





# PREPARING *the* PHYSICIAN



**OUR OVERRIDING PURPOSE** is the formation of Christian physicians, educated to serve as generalists or specialists, providing whole-person care to individuals, families and communities. This responsibility requires the following:

**EDUCATION:** Creating an environment in which medical students, graduate students and residents will acquire the knowledge, skills, values and attitudes appropriate to Christian health professionals and scholars.

**RESEARCH:** Cultivating an atmosphere of inquiry and discovering new routes to wholeness through basic and clinical research.

**SERVICE:** Ministering to the physical, mental, emotional and spiritual needs of patients in a timely and cost-effective fashion with due regard for their privacy, dignity and valid consent; providing diagnostic and therapeutic services in primary and tertiary care settings to patients of all ages, races, religions and socioeconomic backgrounds.

## Developing the Whole Person

The Christian view of wholeness holds that the needs of patients go beyond the healing of the body, and that the development of students involves more than the training of the mind. We are dedicated to promoting physical, intellectual, social and spiritual growth in our faculty and students, and to transforming our daily activities into personal ministries.



Every autumn, the School of Medicine holds its annual Student and Faculty Retreat at Pine Springs Ranch in the San Jacinto Mountains. Students lead worship services, participate in the talent show and share advice for life in medical school.



# SERVICE



The community of Loma Linda has been designated a Blue Zone®, one of five places in the world where residents live significantly longer than other people, according to the book *The Blue Zones* by Dan Buettner published by National Geographic Society.

## Healthy Neighborhoods Project

The Healthy Neighborhood Project (HNP) is a student-run initiative, composed of multiple programs which address the health, educational, physical, emotional and spiritual needs of the San Bernardino community.

- **STREET MEDICINE:** Homeless populations of San Bernardino receive free and high quality transitional care under the supervision of university health services providers.
- **PROJECT HOPE:** Expectant teen parents are paired up with mentors to participate in health and parent education, crafts and hands-on activities at various high schools.
- **SPECIAL OPS:** Students identified as at-risk by San Bernardino school principals are partnered with mentors for outdoor activities and creative projects at various elementary and high schools.
- **COMMUNITY KIDS CONNECTION (CKC) TUTORING:** Youth ages 5-18 are tutored on specific subjects or with completing homework assignments.
- **COMMUNITY KIDS CONNECTION (CKC) MUSIC:** Youth ages 5-18 are taught music lessons. Instruments include violin, cello, piano and guitar.
- **COMMUNITY PARENT CONNECTION (CPC):** Parents and adults in the community receive education in various areas such as English as a Second Language (ESL), nutrition, aerobics, computer literacy, parenting, etc.
- **KIDS ROCK (REACHING OUT IN CHRIST TO KIDS):** Youth ages 5-18 spend Saturday afternoons with this weekly ministry which includes outdoor activities, games, Bible lessons and crafts.

## Students for International Mission Service

Students for International Mission Service (SIMS) exemplifies the university's commitment to global service. International volunteer service opportunities are available during the summer following the freshman year and are also incorporated into the senior year academic curricula. Participants work around the globe in underdeveloped communities that have limited or no access to healthcare and health education. **Forty percent of graduating seniors participate in a global health experience during medical school.** The School of Medicine and School of Medicine Alumni Association assist with a portion of travel costs for SIMS trips of a month or more in length.





## CURRICULUM OVERVIEW

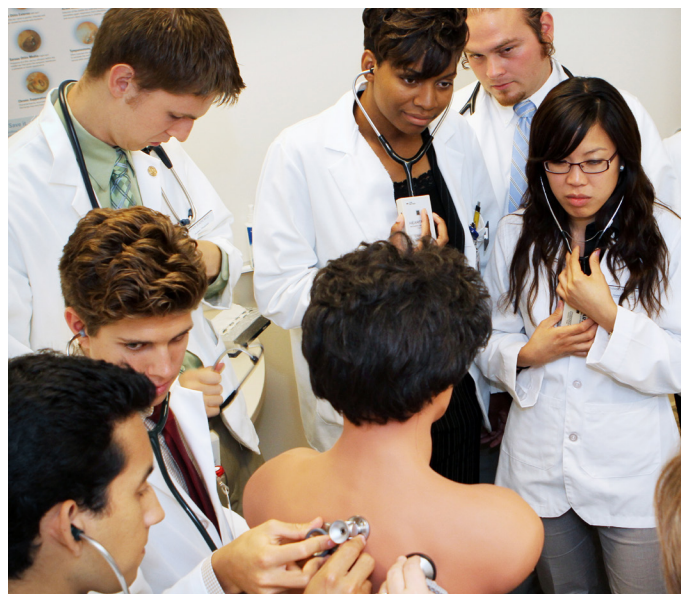
**IN THE FIRST TWO YEARS**, students learn the foundational principles essential to the practice of medicine as part of an integrated organ systems curriculum, which combines basic and clinical science knowledge and skills development. Instructional methods include a variety of active learning modalities in addition to lectures that seek to engage students in the learning process. The second year concludes with integrative case reviews and several weeks of dedicated study time in preparation for USMLE Step 1.

Clinical skills development and professional identity formation are taught longitudinally throughout all four years of medical education. Professional identity formation is supported by Learning Integration Formation Experience (LIFE) Communities that pair small groups of students with faculty mentors; these communities deliver portions of the curriculum, participate in service learning, and provide support and feedback to students through all four years of medical education.

In the third year, students rotate through seven core clerkship experiences organized into primary care (family medicine, internal medicine and pediatrics) and neuro-psychiatry/surgical specialties (general surgery, obstetrics and gynecology and neurology/psychiatry). Intercession weeks throughout the third year provide opportunities for students to engage as a class and focus on a variety of topics integral to medicine, including ethics, applied religion, lifestyle and preventive medicine, patient safety, radiology, resiliency, social determinants of health and delivery of whole person care. Required rotations take place primarily at Loma Linda University Medical Center (the region's only Level I Trauma Center), VA Loma Linda Healthcare System, Kettering Medical Center in Ohio, AdventHealth in Florida, Riverside University

Health System and Adventist Health White Memorial in Los Angeles. Regional campus tracks at AdventHealth Orlando in Florida or Kettering Health in Ohio will be available for the entire junior and senior years. USMLE Step 2 is taken following completion of the junior curriculum.

The senior year provides capstone experiences in the required sub-internship, intensive care, emergency medicine and preventive medicine/public health clerkships. Students also complete a two-week selective in basic science and a four-week selective in a subspecialty of medicine, pediatrics or surgery. Eighteen weeks are available for students to choose additional areas of interest for study. LIFE Communities in the senior year focus on supporting students through the residency application process and preparing students for the rigors of residency.





# Organ Systems Block Curriculum

FRESHMAN YEAR		SOPHOMORE YEAR	
Orientation (TWO DAYS)	Musculoskeletal and Skin (FOUR WEEKS)	Neuroscience and Human Behavior (NINE WEEKS)	GI and Liver (FOUR WEEKS)
Clinical Skills (ONE WEEK)	Endocrine and Reproductive (SIX WEEKS)	Clinical Skills (TWO WEEKS)	Application and Integration (SIX WEEKS)
Foundational Topics (ELEVEN WEEKS)	Spring Break (ONE WEEK)	Renal (FIVE WEEKS)	Dedicated Board Preparation and/or vacation time (SEVEN WEEKS)
Selective (TWO WEEKS)	Cardiovascular (SIX WEEKS)	Selective (TWO WEEKS)	Junior Orientation (ONE WEEK)
Hematology and Immunology (FIVE WEEKS)	Pulmonary (FOUR WEEKS)	Christmas Break (TWO WEEKS)	
CPF Integration Week (ONE WEEK)	Clinical Skills (TWO WEEKS)	LONGITUDINAL COURSES: Christian Physician Formation (CPF), Clinical Skills Development and Religion	
Christmas Break (2 WEEKS)	Summer Break (NINE WEEKS)		
LONGITUDINAL COURSES: Christian Physician Formation (CPF), Clinical Skills Development and Religion			

# Junior and Senior Curricula

FIRST HALF		ADVANCED INTEGRATION WEEK 1	SECOND HALF			ADVANCED INTEGRATION WEEK 2	
Block One (EIGHT WEEKS)	Block Two (EIGHT WEEKS)		Block Three (EIGHT WEEKS)	Block Four (EIGHT WEEKS)	Block Five (EIGHT WEEKS)		Block Six (EIGHT WEEKS)
Internal Medicine	Family Medicine/ Elective (6/2)		Pediatrics	Surgery	OBGYN/ Elective (6/2)		Neurology and Psychology
Family Medicine/ Elective (6/2)	Pediatrics		Internal Medicine	OBGYN/ Elective (6/2)	Neurology and Psychology		Surgery
Pediatrics	Internal Medicine		Family Medicine/ Elective (6/2)	Neurology and Psychology	Surgery		OBGYN/ Elective (6/2)
Block One (EIGHT WEEKS)	Block Two (EIGHT WEEKS)		Block Three (EIGHT WEEKS)	Block Four (EIGHT WEEKS)	Block Five (EIGHT WEEKS)		Block Six (EIGHT WEEKS)
Surgery	OBGYN/ Elective (6/2)		Neurology and Psychology	Internal Medicine	Family Medicine/ Elective (6/2)		Pediatrics
OBGYN/ Elective (6/2)	Neurology and Psychology		Surgery	Family Medicine/ Elective (6/2)	Pediatrics		Internal Medicine
Neurology and Psychology	Surgery		OBGYN/ Elective (6/2)	Pediatrics	Internal Medicine		Family Medicine/ Elective (6/2)
Sub-Internship (FOUR WEEKS)	Intensive Care (FOUR WEEKS)	Preventive Medicine/ Public Health (FOUR WEEKS)	Selective (FOUR WEEKS)	Emergency Care (TWO WEEKS)	Electives (FOURTEEN WEEKS)		





# How *to* APPLY

## MCAT

Applicants are required to present Medical College Admissions Test (MCAT) scores prior to consideration by the Admissions Committee. MCAT scores older than three years **prior to matriculation date** are not considered. Applicants are urged to take the MCAT in the spring of the year of application and to have the basic requirements completed at the time of application.

## Fees

The AMCAS fee is required each time an application is submitted. An **additional fee** is required with the secondary application to the School of Medicine.

## Expenses

Yearly tuition, books, supplies and fees are approximately **\$65,921**; and living expenses are approximately **\$20,450** for a single student. Tuition and fees are subject to change.

## Application Process

LLU School of Medicine is a member of the American Medical College Application Service (AMCAS). Application access and information are available at [aamc.org/amcas](http://aamc.org/amcas).

After receipt of applications from AMCAS, the LLU School of Medicine Office of Admissions sends a web-based secondary application to prospective students. Following a careful evaluation of completed applications, secondary applications and letters of recommendation, selected applicants are invited for a personal interview. Applicants are notified of the Admissions Committee's final decision regarding their application.

## General Entrance Requirements

The secondary school student looking forward to a career in medicine is advised to include mathematics and science courses during his or her high school years. It is expected that applicants complete a bachelor's degree at an accredited college or university prior to entrance into medical school. Exceptional students may be eligible to apply after completion of a minimum of 90 semester hours (135 quarter hours) of college courses. Letter grades are essential for evaluation of the required science courses. Credits must be presented for the following:

Required Courses	Semester	Quarter
General Biology or Zoology (with lab)	8	12
General or Inorganic Chemistry (with lab)	8	12
Organic Chemistry (with lab)	8	12
General Physics (with lab)	8	12
Biochemistry	3	3
English (equivalent to satisfy baccalaureate degree requirement)		
Religion or Ethics (as required by school attended)		

Applicants are required to obtain physician shadowing experience and direct patient care exposure.





## Selection Criteria

Students are sought who have demonstrated throughout their academic experience a quest for a broad understanding in the major areas of knowledge — the natural sciences, the behavioral sciences and the humanities — which assists them in the process of learning through their life experiences.

Competence in the basic sciences must have been demonstrated regardless of major field of study. No preference is given to either science or non-science majors.

Selection of students is based on a review of the complete collegiate academic record, including MCAT scores, recommendations, extracurricular activities and the personal interview. The Admissions Committee seeks individuals who have demonstrated a serious personal commitment to the practice of medicine and have altruistic goals and ideals.

Loma Linda University School of Medicine is owned and operated by the Seventh-day Adventist Church; therefore, preference for admission is given to qualified members of the Church. However, it is a firm policy of the Admissions Committee to admit each year applicants from other faiths who have demonstrated a commitment to Christian principles and who are best suited to meet the educational goals of the School. No candidate is accepted on the basis of religious affiliation alone.

## International Applicants

Prior to applying for admission, international students are required to complete a **minimum of one year** of study at an accredited U.S. or Canadian college or university. Academic competitiveness and proficiency in spoken and written English must also be demonstrated.

## Early Decision Program

LLU School of Medicine participates in the **Early Decision Program (EDP)**. In this program, applicants review medical schools and decide which medical school would best meet their educational goals. Likewise, medical schools seek highly-qualified applicants who meet their mission.

According to AMCAS traffic rules, EDP applicants can apply to **only one US medical school**. Should an acceptance be offered through this program, the applicant is committed to attend that school. Medical schools must communicate their decision to EDP applicants by October 1. Should an acceptance not be offered through EDP, applicants will automatically be placed in the regular applicant pool. The applicant can subsequently choose to apply to other medical schools.

Before submitting an EDP application, students are **strongly urged to review the school's selection criteria**. Those accepted through the EDP are individuals who have demonstrated exceptional performance in both academic and nonacademic areas.

## MD/PhD Program

Students who are energized by the performance of biomedical research and wish to pursue a career in academic medicine may wish to consider earning both the PhD and MD degrees through the **Medical Scientist Program (MSP)**. This program is designed to develop a student's independence and competence as an investigative scientist by providing a broad educational base for the practice of medicine and medically-related research.

**The application process consists of two steps:**

- Apply to the PhD program at [www.llu.edu/apply](http://www.llu.edu/apply)
- Apply to the MD program through AMCAS by selecting the Combined Medical Degree/PhD program

For additional information, please contact Dr. Penelope Duerksen-Hughes, MSP coordinator, at: **909-558-8740** or [pdhughes@llu.edu](mailto:pdhughes@llu.edu).

## Application Timetable

### Early Decision Program Deadline: August 1

Application materials (primary application and letters of recommendation) must be submitted by the deadline.

### Regular MD Program Deadline: November 1

## Coming Soon - Regional Campuses

Regional campus tracks at AdventHealth Orlando in Florida or Kettering Health in Ohio will be available for the entire junior and senior years.

**The application process is as follows:**

- Apply to the MD program through AMCAS.
- Indicate interest in regional campus track on the secondary application.
- If invited, interview with main campus.
- If accepted, interview with regional campus.
- Acceptance offer could be for either main or regional campus.

For additional information, please contact Dr. Elaine Hart, Assistant Dean for Regional Campuses, at [ehart@llu.edu](mailto:ehart@llu.edu).





Our Mission:  
To CONTINUE  
THE *teaching*  
AND *healing*  
MINISTRY OF  
JESUS CHRIST.

*“To make  
man whole.”*



LOMA LINDA UNIVERSITY

School of Medicine

## Contact Us

Office of Admissions, Loma Linda University School of Medicine  
11175 Campus Street, Room 11107 | Loma Linda, CA 92350

909-558-4467 | [admissions.sm@llu.edu](mailto:admissions.sm@llu.edu)  
[medicine.llu.edu/admissions/medicine-md-program](http://medicine.llu.edu/admissions/medicine-md-program)

[facebook.com/LLUmedschool](https://facebook.com/LLUmedschool) | [instagram.com/LLUmedschool](https://instagram.com/LLUmedschool)  
[twitter.com/LLUmedschool](https://twitter.com/LLUmedschool)

