

# THE ALUMNI ASSOCIATION'S 2024 LOMA LINDA SURVIVAL GUIDE

For First-year Medical Students



[www.llusmaa.org](http://www.llusmaa.org)

*The 2024 Survival Guide*  
is produced by your  
Alumni Association,  
School of Medicine of Loma Linda University

11245 Anderson Street, Suite 200  
Loma Linda, CA 92354

909-558-4633  
[www.llusmaa.org](http://www.llusmaa.org)

*The 2024 Survival Guide*

Managing Editor  
Carolyn Wieder

Design  
Calvin Chuang

Assistant Editor and Advertising  
Nancy Yuen



ALUMNI ASSOCIATION  
School of Medicine  
Loma Linda University

*The Alumni Association's 2024 Loma Linda Survival Guide for First-year Medical Students* is an official publication of the Alumni Association, School of Medicine of Loma Linda University. The Alumni Association is not responsible for the quality of products or services advertised in the *Survival Guide*, unless the products or services are offered directly by the Association.

Alumni Association, School of Medicine of Loma Linda University, 2024. All rights reserved.

# Welcome from the Alumni Association President



Congratulations on being accepted to Loma Linda University School of Medicine! We are glad you chose this school and believe your decision to attend a Christian medical school will be of lifelong value. I can still remember my own personal sense of awe when I attended my first lecture.

What a privilege it was to have been accepted and be on the pathway to becoming a physician. It will feel overwhelming at times but it is worth it!

By choosing to come to Loma Linda, you are joining a lifelong community of mission driven physician alumni, a community that cares about you. Among other activities, the Alumni Association raises funds from a variety of sources to support medical students, including you. We hope you will take advantage of some of these funds and activities:

- **Student Survival Guide:** This booklet tells you about campus activities, surrounding communities, and things to do in Southern California. (If you have any “free” time!)
- **Freshman Welcome Picnic:** This welcome event includes food, fun, and fellowship—plus, you’ll have opportunities to win a variety of prizes.
- **Lending Library:** Located in the Alumni Association office, the Lending Library lends textbooks and review books to medical students. Please check it out!
- **After-exam treats:** Exam week is tough, and we understand. We provide snacks after major exams to help you relax with your fellow classmates.
- **Student Mission Trips and Senior Mission Electives:** Alumni donations help you cover the cost of travel to reach those in need overseas.
- **Junior Lab Coat:** Alumni Association gifts a new white coat personalized with your name and the LLU logo.
- **Senior Seminar:** This event includes presentations that provide tips on surviving residency.
- **Senior Interview Host Program:** Various alumni and their families from around the country volunteer to host students traveling to their local area for residency interviews.
- **Annual Postgraduate Convention Gala:** Alumni sponsor 4th-year students and guest to attend the APC Gala with your classmates free of charge, and we invite you to participate by sharing your stories and your talents during the program. Stay tuned for more on this in three years!
- **Student Scholarships:** Very generous donations from your alumni family are making scholarships available to help reduce your debt burden. We can help you to make career decisions without regard to your debt load.

These next four years will be very demanding and will require determination. “Trust in the Lord with all your heart; do not depend on your own understanding. Seek His will in all you do, and He will show you which path to take,” Proverbs 3:5 (NLT). Also, never be afraid to ask for help. We all need each other, and we are called to support one another.

Hold on to your faith now and throughout your career. Be His hands in the world, and when you have run the race and fought the good fight, you can be confident He will say to you, “Well done, my good and faithful servant. You have been faithful in handling this small amount, so now I will give you many more responsibilities. Let’s celebrate together!” Matthew 25:21 (NLT).

Again, welcome to Loma Linda University School of Medicine and to the community of LLU alumni. May your journey here at LLU be one of transformation.

Good luck and God bless,

Marilene Wang '86  
President

# Table of Contents

	Title Page
Alumni Association, SMLLU .....	4
President's Message .....	4
The First Day .....	6
Purchases to be Made .....	6
Where to Eat .....	7
Orientation to Campus.....	8
Telephone Directory .....	8
Administration .....	8
Important Dates.....	9
Background and History of Loma Linda University .....	9
Alumni Association, School of Medicine.....	9
Walter E. Macpherson Society .....	10
Campus Organizations .....	11
Student Association.....	11
Medical Student Organizations .....	11
Religious Organizations.....	12
Musical Organizations.....	12
Campus Services.....	13
Counseling.....	13
University Publications.....	13
Health Plan Coverage .....	13
Campus Recreation .....	14
Drayson Center and Facilities .....	14
Loma Linda Lopers.....	14
Student Lounge .....	14
Alumni Association Medical Student Support.....	16
The Surrounding Communities.....	17
Public Transportation .....	18
Local News Sources.....	18
Libraries .....	18
SDA Churches and Other Worship Options .....	19
Southern California.....	21
Getting Away.....	22
Bike Trails .....	22
Family Hikes .....	24
Great Views .....	24
Beach Fun.....	25
Parks.....	25
Area Skiing and Snowboarding.....	25
Things to Do.....	26
Musical Performances.....	32
Website and Social Media.....	33
Credits .....	34
Campus Map .....	35

# The First Day

<b>Come Prepared:</b>	Bring your School of Medicine issued iPad and student ID badge. Wear professional attire.
<b>Location:</b>	Centennial Complex, Fourth floor, 24760 Stewart Street, Loma Linda, CA 92354
<b>Time:</b>	Wednesday, July 31, 2024, 8:30 a.m.-4:30 p.m.
<b>Parking:</b>	Student parking for orientation and classes is located in Parking Lot X directly adjacent to the Centennial Complex. (Refer to the map on page 34).

## Day's Events:

**Orientation:** Your first year officially begins Wednesday, July 31, at 8:30 a.m. with an orientation program. Plan to arrive early as your student ID badge will need to be scanned to track your attendance for this mandatory event and find a seat prior to the start time.

**Thursday Evening:** The White Coat Ceremony for all first-year students will take place at 5:30 p.m. on Thursday, August 1, 2024. This ceremony is an important and inspirational event held at many medical schools across the country. The service includes an address, recitation of the LLU Physician's Oath, and presentation of the white coats to first year medical students.

**First Year Welcome Picnic:** On Tuesday, July 30, at 4:15 p.m. at the Randall Roberts Amphitheater, LLU Church, the Alumni Association of the School of Medicine welcomes you and a significant other to campus to enjoy a picnic supper. The Class of 2027 will be on hand to welcome and entertain you. Gift certificates will be given away. Don't miss this fun-filled event.

**Books:** School of Medicine curriculum and evaluation policies are designed to encourage learning from standard textbooks as well as course lecture notes and syllabi. Students are encouraged to own personal copies of each required textbook, however, nearly all required textbooks are also available for free online through the University Library. Students should have access to all textbooks, whether purchased at the Campus Store or another vendor, or obtained online prior to the first week of school. In addition to the required textbooks, students are strongly encouraged to purchase any other recommended study resources, such as review books, as the program progresses. We advise you to wait to make such purchases until directed to do so by faculty or the Dean's Office.

If you took any of the classes listed in the Basic Science curricula in college, you may find it helpful to refer to those textbooks.

**Dissection Kit and Gloves:** Each of you will need your own set of dissection instruments. At a minimum, you will need a 5.5" (14cm) sharp/sharp stainless steel dissecting straight scissors, a 5.5" stainless steel serrated forceps, a 6" stainless steel Russian tissue forceps, a 5.5" straight or curved stainless steel Kelly hemostat forceps, a stainless steel scalpel handle #3, and scalpel blades #10. Good quality gloves are also needed that provide dexterity and sensation, but are puncture and abrasion resistant. A good option are nitrile exam gloves with textured fingertips.

**Anatomy Lab Coats:** These need to be long enough to cover your thighs. We recommend having two coats. If you don't already have them, the Campus Store has a limited supply of new coats for \$21-\$42 each. Alternatively, you can receive two coats with student membership in the Walter E. MacPherson Society (\$35 membership - see page 10).

Places to Eat on Campus:

The first few days may seem bewildering, and the last thing you need is to go hungry. Fortunately, the campus is well equipped with cafeterias and cafes. Just swipe your ID card at the following locations and have the meal charged directly to your bill. There is a discount for students at Councilors Student Pavilion (CSP Cafe).

**Children’s Hospital Cafe**—Lobby Level, CH - West

**CSP Cafe**—Councilors Student Pavilion—Corner of Mound & Anderson St. Discount for students

**East Campus Hospital Cafe**—Located on the lobby level, Barton Road

**Loma Linda Market Deli**—Located by the Bakery. Indonesian food

**Lo Melinda’s Buzz & Bloom Coffee & Tea**—Lower level of Faculty Medical Clinics

**Surgical Hospital Cafe**—Barton and New Jersey

**University Hospital Cafe**—Lobby level

**uReach Cafe**—Loma Linda University Church

INTERESTED IN GLOBAL MISSION SERVICE?

The Seventh-day Adventist General Conference is looking for physicians to practice overseas at one of our Adventist Partner sites.



LEARN MORE  
[ghi.llu.edu/dma](https://ghi.llu.edu/dma)

Contact Us:  
[gc@llu.edu](mailto:gc@llu.edu)  
909-558-7747

Deferred Mission Appointee (DMA)

Is a Seventh-day Adventist medical student who is willing to accept a mission appointment in exchange for amortization of student debt while serving abroad in a General Conference approved position. Students may apply as soon as the second quarter of their first year.



# Orientation to Campus

## Telephone Directory

### University Campus

Admissions and Records (Univ).....\*44508  
 Alumni Association .....\*44633  
 Audiovisual Service.....\*44478  
 Campus Store .....\*44567  
 Drayson Center.....\*44975  
 LL University Hospital..... 909-558-4000  
     Adult Emergency Department .....909-651-7233  
     Children’s Emergency Room..... 909-651-6233  
 LLU Faculty Medical Clinics..... 909-558-2840  
 Library, University .....\*44588  
 LLU Behavioral Medicine Center..... 909-558-9200  
 LLU Children’s Hospital ..... 909-558-8000  
 LLUMC East Campus Hospital ..... 909-558-6000  
 Loma Linda Children’s Center (day care) .....909-796-0161  
 Mail Center .....\*44046  
 Post Office, Loma Linda ..... 800-275-8777  
 Residence Halls  
     (Men—Daniells Hall).....\*44562  
     (Women—Lindsay Hall) .....\*44561  
 Risk Management..... 909-651-4010  
 SAC Health System ..... 909-3827190  
 School of Medicine.....\*44462  
 Security—Control Ctr. and Lost & Found .....\*44320  
 SIMS—Students for International Mission Service .....\*88047  
 Student Experience (Univ).....\*44510  
 Student Financial Aid .....\*44509  
 Student Health Service.....\*88700  
 University Church .....\*44570  
 VA Medical Center .....909-825-7084

### Publications

ALUMNI JOURNAL .....\*44633  
 Student Directory .....\*44510  
 Scope.....\*44526  
 Trading Post .....\*44526

+Dial 9 from an on-campus phone to call outside the University.  
 \*Off campus, you may use the prefix of 558 and dial the last four digits of the extension.

NOTE: If you have trouble with any of the on-campus phone numbers, call 558-4000 (Medical Center Operator), or 558-1000 (University Operator) and ask for the extension (or person/department) you are trying to reach.

## Administration

### Administration, LLU

#### President

Richard Hart, MD, DrPH .....\*44540

#### Provost

Ronald Carter, PhD .....\*44542

#### Vice Presidents

Advancement, Rachele Bussell, MA, CFRE.....\*44544  
 Financial Affairs, Rodney Neal, MBA .....\*44543  
 Graduate Medical Education, Daniel Giang, MD.....\*88131  
 Information Systems, David Harris, PhD .....\*87600  
 Research Affairs, Michael Samardzija, PhD, JD ..... 909-651-5920  
 Student Experience, Karl Haffner, PhD .....\*44510

#### Deans

Allied Health Professions, Craig Jackson, JD, MSW .....\*44545  
 Behavioral Health, Beverly Buckles, DSW .....\*48905  
 Dentistry, Robert Handysides, DDS .....\*44683  
 Medicine, Tamara Thomas, MD .....\*44481  
 Nursing, Shawn Collins, DPN, PhD .....\*44517  
 Pharmacy, Kyle Sousa, PhD .....\*87442  
 Public Health, Adam Arechiga, PsyD, Dr PH .....\*44578  
 School of Religion, Leo Ranzolin, ThD .....\*44536

#### School of Medicine Dean’s Office

Tamara Thomas, MD, Dean, .....\*44481  
 Assoc Dean, Student Affairs.....\*44630  
 Kevin Codorniz, MD, Assoc Dean, Clinical Educ .....\*44271  
 Lynda Daniel-Underwood, MD, PhD, Assoc Dean, Curriculum \*44466  
 Penelope Duerksen-Hughes, PhD, Assoc Dean, Basic Sci & Trans Res .....\*44480  
 Hansel Fletcher, PhD, Asst Dean, Graduate Student Affairs ..\*44480  
 Daniel Giang, MD, Assoc Dean, Grad Med Ed.....\*88131  
 Roger Hadley, MD, Emeritus Dean.....44481  
 Elaine Hart, MD, Asst Dean, Regional Campuses .....\*44271  
 Amy Hayton, MD, Assoc Dean, Physician Formation & Wholeness \*14991  
 Paul Herrmann, MD, PhD, Vice Dean, Academic Affairs.....\*43209  
 Anthony Hilliard, MD, Assoc Dean, Clinical Faculty Operations \*44756  
 Robert Martin, MD, Assoc Dean, Clinical Faculty Finance...\*88054  
 Linda Mason, MD, Asst to Dean for Medical Staff Affairs ....\*42257  
 Khiet Ngo, DO, Asst Dean, Curricular Innovation .....\*44773  
 James Pappas, MD, Assoc Dean, Quality & Patient Safety .....\*33608  
 Ricardo Peverini, MD, Vice Dean, Clinical Affairs.....\*15582  
 Susan Ranzolin, BSN, Asst Dean, Admissions .....\*44467  
 Leroy Reese, MD, Assoc Dean, Los Angeles Programs (323) 881-8840\  
 Samantha Renteria, Director, Records & Student Services.....\*44729  
 Sarah Roddy, MD, Assoc Dean, Admissions & Recruitment.\*44467  
 Dan Rogstad, MD, PhD, Assoc Dean, Med. Student Edu .....\*44255  
 Laren Tan, MD, Asst Dean, CME.....\*44663  
 Alice Wongworawat, MBA, Assoc Dean, Finance & Adm .....\*49438  
 M. Daniel Wongworawat, MD, Asst Dean, Career Advisement.....\*44271



 **Important Dates**

**Freshman 2024-2025 Academic Year**

Orientation.....	July 31-August 2, 2024
Labor Day.....	September 2, 2024
Pine Springs Ranch.....	October 4-6, 2024
Thanksgiving.....	November 27-29, 2024
Christmas Break.....	December 21-January 5, 2025
Martin Luther King Jr. Day Holiday.....	January 20, 2025
Family Day and Dedication.....	February 14, 2025
President’s Day.....	February 17, 2025
Annual Postgraduate Convention.....	February 27-March 3, 2025
Spring Break.....	March 31-April 4, 2025
Clinical Ward Experience.....	March 17-28, 2025
Memorial Day.....	May 26, 2025
Last Day.....	June 13, 2024

 **Background and History of Loma Linda University**

Loma Linda University is a Seventh-day Adventist educational institution founded in 1905 by John A. Burden. Pastor Burden came to California in 1904 as a representative of Ellen G. White, one of the founders of the Seventh-day Adventist Church.

Pastor Burden’s purpose was to establish medical institutions in Southern California dedicated to the restoration of the whole person by combining the latest and best in medical science with spiritual therapy in the tradition of evangelical Christianity.

The property where Loma Linda University now stands was developed for the plush Mound City Hotel during the boom days of 1887–1888. Following the depression of the 1890s (during which the hotel complex failed), a group of investors, including a large number of physicians, bought the property. About \$155,000 was invested in the property and buildings in hope of making Loma Linda one of the finest health resorts in Southern California. This venture also failed.

When the property came to the attention of the Adventists, the asking price of \$110,000 was prohibitive for the fledgling church. However, the price continued to drop until the early summer of 1905, when the stockholders ordered the property sold for \$40,000.

The local church leaders were in Washington, D.C., world headquarters of the Seventh-day Adventist Church, when a letter arrived from John Burden urging immediate action lest the property be sold to others.

Informed that the local Southern California conference could not take on the additional financial responsibility, Ellen White nevertheless wired instructions to secure an option. With private funds the group paid off the note, now discounted to \$38,900, before the end of the year.

On August 26, 1905, the Sanitarium was incorporated; on Friday, October 13, the first two patients were admitted. Loma Linda was in business.

Today, at Loma Linda University, approximately 4,200 students enroll annually in the professional curricula offered by the Schools of Allied Health Professions, Behavioral Health, Dentistry, Medicine, Nursing, Pharmacy, Public Health, and Religion.

Since its inception, Loma Linda University School of Medicine has graduated over 13,700 physicians. A large percentage of these graduates have served or are now serving abroad.

A cosmopolitan atmosphere is reflected in the University’s student body. Students from over 86 countries and every state in the nation attend LLU every year.

**School of Medicine**—Approximate total living alumni: 9,800 The four-year professional curriculum in medicine was first offered in 1909. Establishment of the program—largely on faith alone—was followed by a 13-year struggle for survival; the Church-operated College of Medical Evangelists finally received the coveted “A” rating in 1922 for its School of Medicine. With the completion of the LLU Medical Center in 1967, the School of Medicine was able to consolidate its curriculum on the Loma Linda campus; previously, two years were taken at Loma Linda and two years in Los Angeles.

 **Alumni Association, School of Medicine**

The Alumni Association, School of Medicine of Loma Linda University, represents more than 9,800 living graduates of the School. The Association was organized in 1921, 12 years after the School of Medicine was founded. You are about to become part of the rich heritage which claims graduates in 34 nations of the world and in each state of the United States.

Basically a service organization, the Alumni Association operates independently from the School of Medicine or the University as a nonprofit corporation. It was formed to serve students, support LLUSM alumni, and to encourage participation in short- and long-term mission service.

What follows is a brief overview of how the Association works in these areas.

**Medical Students:** The Alumni Association actively supports students, hosting events such as the Freshman Welcome Picnic which provides classes the opportunity to meet together for the first time. The Alumni Association also provides treats after exams, providing a time for students to interact. Students are encouraged to apply for the *Paying It Forward* Scholarship which provides funds that cover half of their tuition in their third and/or fourth years. Watch for announcements from the School of Medicine about the *Paying It Forward* Scholarship.

Guided by the Student Affairs Council, the Alumni Association provides services that contribute to students’ success in medical school and as they prepare to apply to residency programs and for residency interviews. Services include the Student Lending Library at the Alumni Association office where students may borrow reviewbooks and resources for classes and boards, Senior Seminar and much more. Alumni care about students, and a growing number of alumni have opted in to become mentors, review resumes, and to host students during clinical rotations and residency interviews.

Students can also help build the Alumni Association community and be rewarded for it by participating in the Student Ambassador Program, inviting alumni to become perpetual members. For more information, check out <https://llusmaa.org/student-ambassador/>.

**Alumni:** Each year in March, alumni are invited to participate in the Annual Postgraduate Convention (APC). Held on the Loma Linda campus as part of Homecoming, APC provides continuing education courses in a variety of specialties and for the family physician. The Alumni Association periodical, the *ALUMNI JOURNAL*, provides articles of interest and information about activities of alumni around the world. The *JOURNAL* also includes placement opportunities submitted by physician recruiters. The *ALUMNI DIRECTORY*, which lists alumni contact information, is published annually and is sent to dues-paid members and perpetual members. Alumni are also invited to join Lifetime Experience trips organized by the Alumni Association.

**Missions:** Alumni join the Alumni Association in actively supporting specific global medical mission institutions and projects. Alumni are also invited to explore short- and long-term volunteer mission opportunities at international mission sites in Africa, Asia, Central America, and the Pacific Islands. Information is available on the Alumni Association website at [www.llusmaa.org](http://www.llusmaa.org).

**JUNIOR MEDICAL AUXILIARY (JMA):** All School of Medicine students and spouses are invited to become members of the JMA. JMA has vespers and many social activities during the school year. JMA provides the opportunity for friendship, support, and networking.

**LLU MEDICAL AUXILIARY:** This organization supports the Little White House that shares donated clothing and household items with students for their own personal use. They also provide scholarships, student assistance, and funds for medical mission projects. Please contact them at 909-558-4639 or visit their website at [www.llumedaux.org](http://www.llumedaux.org)



## Walter E. Macpherson Society

The Walter E. Macpherson Society (WEMS) is a nonprofit society organized in 1963 to foster and recognize excellence among students and faculty. It functions separately from the Alumni Association.

WEMS supports medical education by:

- (1) Providing scholarships for medical students during the summer research program between their freshman and sophomore years of medicine.
- (2) Giving a cash award to the winners of the Research and Clinical Scientific Poster Sessions for students, residents, and fellows during APC.
- (3) Rewarding Students who publish research conducted during their medical training with certificates and cash awards to winning publications.
- (4) Offering students two Anatomy lab coats as part of their student membership (\$35 for 4 years).

Through the years, the Macpherson Society has given more than \$2 million to the School of Medicine. It has established a Macpherson Learning Center (Harvey Simulation Lab) in the Centennial Complex. The sole purpose of the society remains to “promote excellence in medical education and research.”

Little White House   
 Scholarships   
 DUO   
 Missions



School of Medicine  
Alumni Association  
AUXILIARY  
Loma Linda University

## Loma Linda University Medical Auxiliary 2024-2025

Welcomes You

We are here to support YOU!!  
[contact@llumedaux.org](mailto:contact@llumedaux.org) (909) 558-4639

Little White House   
 Scholarships   
 DUO   
 Missions

# Campus Organizations



## Loma Linda University Student Association

The Loma Linda University Student Association (LLUSA) is an organization endorsed by University administration as an arena through which student involvement in the function of the University is encouraged. The General Student Council acts as the governing body and consists of the elected officers as well as representatives from each school.

The primary purpose of the council is to provide a channel for dialogue between students and administration. The council takes an active role in improving campus life by organizing student activities and representing student ideas and concerns to University Administration.

The ultimate goal of the LLUSA is to nurture the growth of highly educated, mature, responsible, and informed Christian leaders.

If you are interested in participating and becoming involved, contact your class representative or the Dean's Office.

Student organizations that operate within the School of Medicine and that are represented on the School of Medicine Senate include the following: the American Medical Association—Medical Student Section (AMA-MSS), LLU Chapter; the American Medical Student Association (AMSA), LLU Chapter; the Association of Women Surgeons, LLUSM Chapter; Asian Pacific American Medical Association (APAMSA); the Christian Medical & Dental Association (CMDA); Latinidad; Latino Medical Student Association (LMSA); Magic Aid; the Organization of Student Representatives (OSR) to the AAMC; Student National Medical Association (SNMA), LLU chapter; American Medical Women's Association; Running Club; American Physician Scientist Association; Basic Science Student Council; Armed Services Scholarship Club; Wilderness Medicine Club; the SUPER Stroke Club; Global Surgery Student Alliance.

LLU students are represented by peers at the San Bernardino County Medical Society, the California Medical Association, the American Medical Association, the American Medical Student Association, the Association of American Medical Colleges, and the Student National Medical Association.

School of Medicine students provide leadership for several community service programs. These include the Healthy Neighborhoods Project which involves about 100 School of Medicine student volunteers in tutoring and mentoring programs for pregnant and parenting teens, at-risk youth, and grade school students in the San Bernardino Unified School District.

The Associate Dean for Student Affairs of the School of Medicine is the official liaison between the dean's office and all School of Medicine student organizations. Officers of student organizations, including editors of student publications such as class yearbooks, work closely with the Associate Dean for Student Affairs to ensure that their plans are in harmony with School policies and their activities have been approved by the School.

### SUMMER EDUCATIONAL/SERVICE OPPORTUNITIES

Medical students are offered a number of University-sponsored activities that can be accomplished during the summer between the freshman and sophomore years. Two of these programs are **SIMS (STUDENTS FOR INTERNATIONAL MISSION SERVICE)** and the Summer Research Program. SIMS organizes mission trips to various parts of the world. The primary times when medical students may arrange to go on SIMS-sponsored trips are during the summer following the freshman year and during the senior year. A freshman medical student may contact the School of Medicine dean's office about financial assistance toward the cost of the airfare for a SIMS mission trip of at least four weeks.

Approximately 70 or more students do summer research each year. Students who have completed their freshman year may apply for a position in the **SUMMER RESEARCH PROGRAM** supervised by a LLUSM faculty member. A financial stipend is available for students who spend seven weeks of full-time work in an assigned research project.



## School of Medicine Student Organizations

Each class holds annual elections for class officers. Class officers include, but are not limited to the following: president, vice president, social vice president, pastor, secretary, treasurer, community engagement partners coordinator, diversity, equity, and inclusion officer, resilience officer, chaplain, and two senators to the School of Medicine Student Association (SMSA). During the freshman year, the first-year class officers meet with the Associate Dean for Student Affairs to select a class representative to the Student Affairs Council of the Alumni Association SMLLU. The selected student serves a four-year term provided he/she remains in good and regular academic standing and continues to be a member of the original class. This representative serves as a class officer.

The purpose of the Loma Linda University School of Medicine student organizations is to: 1) Create an avenue through which students may seek constructive solutions to problems and enhance their educational experience; 2) Develop ways to further the mission of the School and add to the medical school experience by organizing social, spiritual, and service activities; 3) Engage students in issues related to medical education and health care through participation in regional and national professional organizations. At registration into the School of Medicine, students automatically become members of the School of Medicine Student Association (SMSA). The SMSA senate includes the following members: The president, vice president, pastor, secretary, treasurer, and community services coordinator of SMSA; the president and two elected senators from each of the four classes; the School of Medicine's representative to the Organization of Student Representatives (OSR) of the Association of American Medical Colleges (AAMC); and the president or designated representative of each School of Medicine student organization with the exception of the medical specialty interest groups.



## Religious Organizations

There are a wide variety of worship options in the Inland Empire for students of all faiths. School of Medicine students have prepared a list of a wide variety of denominations in the area that medical students have participated in. You may request this list from the SM Student Affairs Office, or see page 19 for an abbreviated list. The Campus Hill and University Churches are on campus to provide worship, community, and service opportunities to students. The regularly held SDA services on campus are as follows:

**CAMPUS HILL CHURCH:** Located on the upper campus of LLU, the church provides a variety of spiritual, social, and outreach activities for worshippers of all ages. For further information call (909) 796-0222 or visit [www.campushillchurch.net](http://www.campushillchurch.net).

### Experience Great Worship, Bible Studies, and Support:

1. **Sabbath School Options**—Saturday (Sabbath) 9:45–10:50 a.m. A variety of choices for fellowship/discussion and lecture/discussion as well as classes for children and youth, especially kindergarten through early teen, who participate in multi-age learning settings.
2. **Sanctuary Service**—Saturday (Sabbath) 11:00 a.m.–12:30 p.m. Emphasis is placed on Biblical preaching and congregational participation in a rich mix of hymns and praise songs.

### LOMA LINDA UNIVERSITY CHURCH (LLUC):

Our church family is located on the campus of LLU. There are many opportunities to grow deeper in your spiritual walk through worship and study, building meaningful and lasting relationships by connecting with our community groups, and using your talents in service for others.

**Worship With Us:** Participate in real authentic worship and experience inspiring and life-transforming messages from the Word of God. Music is a huge part of our worship experience. Our worship service offers a variety of exceptional music styles from praise to a full orchestra.

**Worship Service Times:** Sabbath at 9:00 and 11:45 a.m. (Traditional). 10:00 a.m. and 11:30 a.m. Anthem (Modern)

**Connect & Build Community With Us:** We have a variety of ministry groups for you to connect with for community and service.

#### Praxis Ministry (Young Adults)

- Sabbath School, Saturday at 10:00 a.m.
- Night Church, Friday at 7:30 p.m.
- Midweek life groups
- Socials
- Follow us on IG Praxis Ministry

#### Music Ministry:

- **Sanctuary Choir:** uplifting sacred choral repertoire. Great fellowship. Participates three Sabbaths a month in LLUC worship services. Rehearsals on Friday evenings at 7:00 p.m. Contact Brenda Mohr at [brendajmohr@gmail.com](mailto:brendajmohr@gmail.com)
- **Sanctuary Brass:** Intergenerational brass ensemble. Participates once a month in LLUC worship services. Rehearsals Wednesdays 7:00 – 8:00 p.m. Contact Craig Mohr at [craigmohr65@gmail.com](mailto:craigmohr65@gmail.com)
- **Sanctuary Orchestra:** Uplifting sacred and classical repertoire. Great fellowship. Rehearsals about every other month on Friday evenings, 7:00 - 8:30 p.m. Contact Adriana Perera at [aperera@lluc.org](mailto:aperera@lluc.org)

#### UReach Ministry:

Meets the needs of people in our local community through:

- Meals on Wheels
- Transit Service
- Re:Live Thrift
- EXCELL Tutoring and Mentoring

#### Media Ministry:

Serve our local community and viewers worldwide gaining experience and helping with our live production.

- Camera operator
- Productionst
- Graphics
- Acting
- Audio engineer

For more information on how you can get connected and become a part of our LLUC family, please visit [www.lluc.org](http://www.lluc.org) or contact Joelle Reuer, Pastor for Discipleship, at (909) 558-4570, ext. 85739.



## Musical Organizations

**Loma Linda University Church Sanctuary Choir:** Excellent musical selections and many classics. Rehearsals on Friday evenings at 7:00 p.m. Contact Brenda Mohr at (909) 558-4570, ext. 58945.

**Loma Linda University Church Sanctuary Brass:** Wednesday evening rehearsals, 7:00–8:00 p.m. Contact Craig Mohr at (909) 558-4570, ext. 58945.

**Loma Linda University Church Sanctuary Orchestra:** Rehearsals as needed for performances (about every other month in church, usually for 1.5–2 hours on the evening before performance). Contact Adriana Perera at (909) 558-4570, ext. 47080.

# Campus Services

## Counseling

The University and School of Medicine emphasize that students reach their maximum potential when their preparation for professional careers is accompanied by a parallel development of their emotional, social, and spiritual capacities.

There are four options available for medical students to take advantage of personal or family counseling. One is the Student Assistance Program (SAP)/Student Counseling. The SAP provides counseling for medical students and their families as well as evaluation and treatment recommendations and referral services at no cost to students.

The second is the Office of Physician Vitality. Two professional counselors are available for short term counseling services.

The third is the Department of Psychiatry/Behavioral Health Institute which has psychologists, social workers, and marriage & family therapists available for counseling students. There is also a psychiatrist who does not have a role in student education or evaluation specifically designated to see medical students. In addition, protocols are in place to assure that no mental health providers will be involved in the teaching or evaluation of medical students for whom they have provided professional services. Visits have a \$10 copayment except in the case of physicians, whose copayment is \$40.

The fourth is licensed counselors in the community who are preferred providers services for the LLU Student Health Plan. Counselors on the Preferred Providers list may be seen for a copayment of just \$10 and a \$40 copayment for a psychiatrist.

More information about student counseling resources is available on the School of Medicine Student Affairs website at <https://medicine.llu.edu/academics/student-affairs/student-counseling-resources>

## Health Plan Coverage

The University provides primary care health services to students through Student Health Service (SHS), located in Evans Hall, extension 88770. SHS is open Monday–Thursday, 8:00 a.m.–5:00 p.m., and 8:00 a.m.–2:00 p.m. on Friday. Appointments are recommended but not required. All of the professional services provided at the SHS are provided to the student at no cost.

Students will have a new health plan that goes into effect on 7/01/2024. The new plan is United Healthcare Student Resources(UHCSR). Within 48 hours of United receiving student’s eligibility, they will send an e-mail to the student via their LLU student email account with all plan information.

The following links will contain the most updated information:  
 United’s Site: <https://www.uhcsr.com>  
 Type in Loma Linda University

- Student Health Transition LLU student portal page: <https://my.llu.edu/studentportal/main/page/student-health-insurance-plan/> which will give the following information:
- Benefits Overview
- Steps to Enroll Dependents
- Information on voluntary Vision and Dental plan options
- FAQ document
- Access to ID Card and Additional Information

## University Publications

**ALUMNI JOURNAL** is published three times per year by the Alumni Association of the School of Medicine of Loma Linda University. Its 7,000-plus readers include alumni, residents, medical students, and a list of subscribers around the world. The magazine includes feature articles of interest to alumni and students, editorials, and sections highlighting the activities of the medical school, Association, and alumni across the globe.

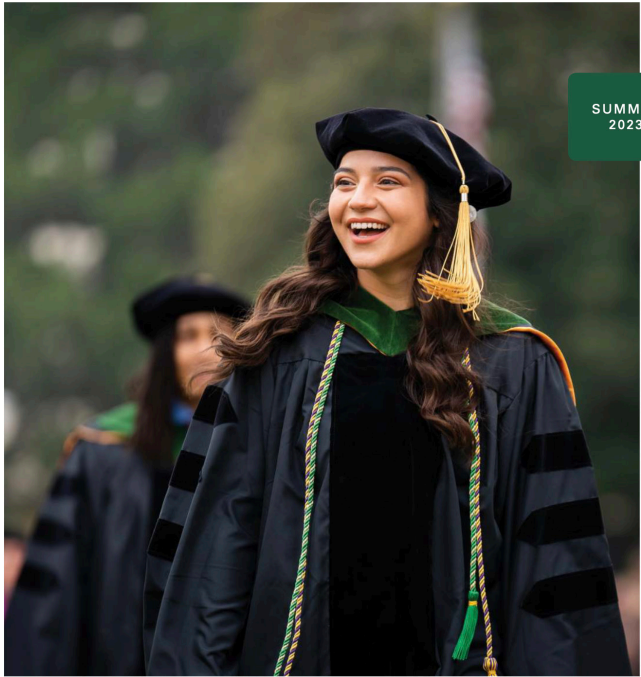
**SCOPE** is a publication of the Marketing & Communications Department. Its circulation includes alumni and friends of LLU. *SCOPE*’s purpose is to keep LLU’s constituency informed of current news and features of the University. Free *SCOPE* subscriptions are available. Just send your name, address, city, state, and zip code to *SCOPE*, 11157 Anderson St., Loma Linda, CA 92354. (*SCOPE* is automatically sent to all LLU alumni.)

**TRADING POST** is a weekly advertiser published by the University. Ads must be submitted by mail to Digital Production Ink, 11161 Anderson St. Ste. 105, Loma Linda, CA 92354. Deadline for classified ad copy is Wednesday, 4:00 pm. The paper appears on Friday mornings. Rates per week, per ad: \$8 ad up to 25 words; \$12 ad up to 50 words; \$16 ad up to 100 words. Lost and Found classified ads are free for one week.

ALUMNI JOURNAL

ALUMNI ASSOCIATION,  
SCHOOL OF MEDICINE  
OF LOMA LINDA  
UNIVERSITY

SUMMER  
2023



**2023 GRADUATION FESTIVITIES**  
Celebrating the newest members of our worldwide community of alumni, the class of 2023

**INSIDE:**  
Department Report: Surgery | Alumni Association Celebrates 100 Years | Two Epochal Leaders

# Campus Recreation



## Drayson Center

- Five lighted tennis courts
- Four permanent lighted pickleball courts
- Half-mile running track
- Lap pool with 10 lanes
- Leisure pool with giant water slide, Jacuzzi
- Two sand volleyball courts

### Indoor Facilities

- Three full-length basketball courts
- Five volleyball courts
- Nine badminton courts
- Five racquetball courts
- Aerobics and martial arts studios
- Cardio and weight rooms
- Men's and women's dry saunas, therapeutic massage
- Golf Simulator
- Tenth-mile elevated track
- Table tennis
- Locker rooms and showers
- Personal training

Intramural leagues featuring various sports are available throughout the school year and most summers. Watch for announcements at [drayson.llu.edu/intramurals](http://drayson.llu.edu/intramurals). Membership is complimentary with a valid LLU student ID, and immediate family members consisting of spouse and children age 24 and under are also free with proper identification. Sports equipment for use on the premises is available for checkout. Visit [drayson.llu.edu](http://drayson.llu.edu) for hours, closures, and program information.



## Loper's Club

Sitting in classes all day may make you decide to become involved in an exercise program, or perhaps you just need a break. Jogging may be the answer. If it is, you are not alone.

The Lopers Club, with over 700 members, meets every Sunday at 6:30 a.m. at the Drayson Center.

You don't have to be an accomplished jogger to join; they'll help you get going. One of the main activities of the Loper's Club is to train walkers, runners, or joggers to complete their first, full 26.2-mile marathon each year.

For further information visit [www.lopersclub.org](http://www.lopersclub.org).



## School of Medicine Student Lounge

The Donna & Roger Hadley Student Lounge is located in Coleman Pavilion Room A1105. The Student Lounge houses several computers, a kitchenette, and comfortable seating in a warm, contemporary atmosphere for students to use for study and socialization.



# SBCMS



### Complimentary membership in our medical society:

- Prepares you for the business side of medical practice
- Creates a pathway for professional leadership
- Offers representation in mode of practice forums
- Provides networking with established physicians and AMA
- Develops your voice in organized medicine



Contact us today at [scobb@sbcms.org](mailto:scobb@sbcms.org) to complete your **free** membership application and get started with medical society activities!

Automatically includes dual membership with California Medical Association (CMA).

San Bernardino County Medical Society

1859 W. Redlands Blvd. | Redlands, CA 92373 | (909) 273-6000

[sbcms.org](http://sbcms.org) | [facebook.com/sanbernardinocountymedicalsociety](https://facebook.com/sanbernardinocountymedicalsociety) | @SBCMS



LOMA LINDA UNIVERSITY  
School of Medicine



ALUMNI ASSOCIATION  
School of Medicine of Loma Linda University

# Alumni Association *Paying It Forward* Scholarship

For third- and fourth-year  
Loma Linda University  
School of Medicine Students



## About the Scholarship:

The *Paying It Forward* Scholarship aims to assist junior and senior medical students who are actively involved in their class, the school, or the broader community by providing a 50% tuition and fees scholarship for one academic year.

Recipients of the scholarship are also connected with their sponsor or a designated mentor to support their journey.

Those receiving the scholarship also agree to “pay forward” the amount they receive within 20 years to the scholarship program, allowing the program to grow and future students to benefit! (Example: if you receive \$33,000, you donate \$33,000 to the program within 20 years.)

## Why Apply:

Receiving the scholarship benefits you now and into the future.

Example: For a one-year \$33,000 *Paying It Forward* Scholarship paid forward on year 10 you will save approximately

**\$9,000–\$14,000 SAVED in student loan interest**

**&**

**\$10,000 SAVED in taxes**

for the \$33,000 donated (paid forward)

These numbers are double for those who are awarded the scholarship in their junior and senior years!

## How to Apply & More Information

Email: [smscholarships@llu.edu](mailto:smscholarships@llu.edu)



# ALUMNI ASSOCIATION

School of Medicine of Loma Linda University

Here to serve and support medical students during medical school

## SM1



**Freshman Welcome Picnic**  
Food, fun, and plenty of prizes out on the lawn. Come meet your classmates!



**Student Guide & Messenger Bag**  
Helpful "Survival Guide to Loma Linda" sent to you. Complimentary messenger bag provided during orientation.



**Treats After Exams**  
Enjoy a celebratory treat after your exam as you discuss the difficult questions with your classmates.



**Financial Assistance For Student Mission Trips**  
Reimbursement to help cover your mission trip travel.

## SM2



**Sophomore Lab Coat**  
One lab coat, embroidered with your name and the LLU logo.



**Treats After Exams**  
Collect a celebratory treat after your exam as you discuss the difficult questions with your classmates.

## SM3



**Junior Match Symposium: "Strolling Through the Match"**  
Information on applying to programs and getting into the residency and career you want. ([www.aafp.org](http://www.aafp.org))



**Interview Preparation**  
Helpful information available on our website, including faculty advice, to prepare you for your senior interviews.

## SM4



**Senior Seminar**  
Valuable tips on how to survive residency, plus lunch, door prizes, and a special memorabilia mug.



**Senior Orientation Gift**  
Look extra sharp during interviews with a complimentary professional padfolio featuring the LLUSMAA logo.



**Interview Preparation**  
Helpful information available on our website, including faculty advice, to prepare you for your senior interviews.



**Financial Assistance For Student Mission Electives**  
Reimbursement to help cover your mission elective travel.



**Residency Interview & Graduation Portraits**  
High-quality professional and regalia portrait taken at the Alumni Center's photography studio.



**Annual Postgraduate Convention Gala**  
Complimentary Gala invitations for you and your significant other, plus great door prizes.



**Interview Host Program**  
Connect with alumni for assistance with housing, transportation, etc., during interview trips.



**Yearbook Assistance**  
Financial support for your class yearbook so you can remember your days as a medical student.

## EVERY YEAR



**Financial Assistance**  
Financial support for student volunteer groups and student events.



**Support For Healthy Neighborhoods Projects**  
Financial assistance for student volunteers helping their community.



**Lending Library**  
Medical school textbooks, review books, etc., available at Alumni Center. Be sure to visit the free book section.



**Pine Springs Ranch Retreat Ice Cream Feed**  
Ice cream and toppings available after the Talent Show.



**Research Scholarly Activity**  
Reimbursement assistance to help cover your scholarly activity (poster printing, meeting registration fees, etc.)



**Annual Postgraduate Convention**  
Entry into lectures and exhibit hall, plus Monday lunch: all free.

**Stop by our office. We would love to become acquainted.**  
Alumni Association, School of Medicine of Loma Linda University  
11245 Anderson St., Suite 200, Loma Linda, CA 92354  
(909) 558-4633 | [llusmaa@llu.edu](mailto:llusmaa@llu.edu) | [www.llusmaa.org](http://www.llusmaa.org)



# THE SURROUNDING COMMUNITIES



## Public Transportation

### Airports

Hollywood Burbank Airport: (818) 840-8840 [www.hollywoodburbankairport.com](http://www.hollywoodburbankairport.com) 71.4 miles  
 Los Angeles International (LAX): (310) 646-5252 [www.flylax.com](http://www.flylax.com)  
 Ontario International: (909) 937-2700 [www.flyontario.com](http://www.flyontario.com) 21.5 miles  
 Orange County John Wayne Airport (949) 252-5200 [www.ocair.com](http://www.ocair.com) 51.8 miles  
 Palm Springs Intl Airport (760) 318-3800 [www.flypsp.com](http://www.flypsp.com) 52.5 miles  
 San Bernardino International (909) 382-4100 [www.flysbd.com](http://www.flysbd.com)  
 Daily flights to San Francisco, Provo, UT and Hartford CT,  
 Las Vegas, NV, Phoenix, AZ  
 3.6 miles

### Buses

Omnitrans stops every 75 minutes in Loma Linda, and sbX rapid transit every 20-30 min. Bus fare is \$2.00 one way, or \$6.00 for an all-day pass. For more information call (800) 966-6428 or visit [www.omnitrans.org](http://www.omnitrans.org). Greyhound/Trailway Bus Lines: 596 North G Street, San Bernardino, (909) 884-4796

### Trains

Amtrak local depot, 1170 W. Third Street, San Bernardino. For more information call (800) 872-7245.

Metrolink—A long distance commuter train to Union Station in Los Angeles from Redlands, San Bernardino or Riverside, 7 days/week. Call (800) 371-LINK or visit [www.metrolinktrains.com](http://www.metrolinktrains.com). The new Arrow Service is now available between San Bernardino and Redlands, terminating at U of R.

### Other

There is no direct public transportation between Loma Linda and the Ontario and Los Angeles International airports. However, shuttle services are available: Apex Transportation: 1-888-938-4500—[www.1800fly1800.com](http://www.1800fly1800.com). For a cheap fare, check out the Metrolink to Union Station, and the FlyAway Bus to LAX. Allow at least 3 hours.

## Local News Stories

### Los Angeles Times

2300 E. Imperial Hwy, El Segundo  
 (800) 252-9141—[www.latimes.com](http://www.latimes.com)

### Redlands Daily Facts

1255 W. Colton Ave, Redlands  
 (909) 890-0407—[www.redlandsdailyfacts.com](http://www.redlandsdailyfacts.com)

### Riverside Press-Enterprise

1825 Chicago Ave, Ste. 100, Riverside  
 (951) 684-1200—[www.pressenterprise.com](http://www.pressenterprise.com)

### San Bernardino Sun

473 E. Carnegie Dr, Ste. 250, San Bernardino  
 (909) 889-9666—[www.sbsun.com](http://www.sbsun.com)

## LLU Libraries

### Barbara J. Orr Student Lending Library

Alumni Association, SMLLU  
 11245 Anderson, Ste. 200  
 558-4633, or Extension 44633

### Del E. Webb Memorial Library <https://library.llu.edu>

Loma Linda University  
 Information, 558-4588 or Extension 44588

### Leffingwell Library (Anesthesiology)

Room 2525, 2nd Floor, LLUMC Research Wing  
 Extension 46174

### Multidiscipline Lab, School of Medicine

Basement of Risley Hall  
 (A good place for medical students to study.)

### Orthopaedic Surgery Library

East Campus Ambulatory Building, 11406 Loma Linda Dr.  
 Extension 66443

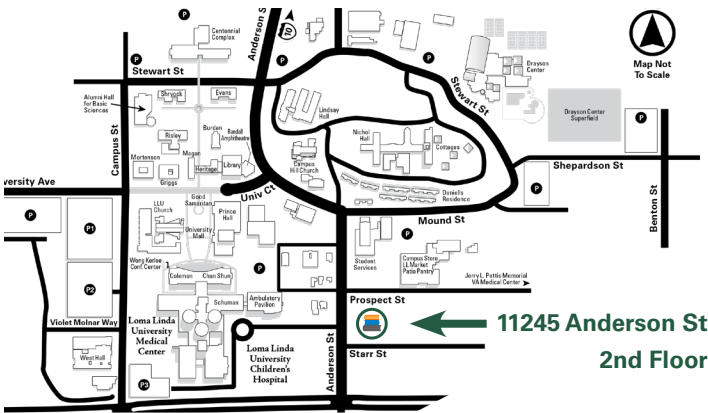
### Stilson Library (Radiology)

Room 2606, Schuman Pavilion  
 Extension 45537



### Free Used Books & Lending Library for Medical Students

Location: 11245 Anderson St., Ste. 200, (2nd floor, first left)  
 Hours: Monday to Thursday, 8 a.m. to 6 p.m.  
 Contact: (909) 558-4633



# Seventh-day Adventist Churches

## LOMA LINDA AREA

Loma Linda Campus Hill Church  
11057 Hill Drive  
Loma Linda 92354  
(909) 796-0222  
[www.campushillchurch.net](http://www.campushillchurch.net)

Loma Linda Chinese Church  
25665 Van Leuven St.  
Loma Linda 92354  
(909) 824-0274  
[www.llcadventistfaith.org](http://www.llcadventistfaith.org)

Loma Linda Filipino Church  
11180 New Jersey St.  
Redlands 92373  
(909) 798-3822  
[www.llfc.org](http://www.llfc.org)

Loma Linda Indonesian Church  
10827 California St.  
Redlands 92373  
(909) 307-3270  
[www.llisdac.org](http://www.llisdac.org)

Loma Linda Korean Church  
11487 New Jersey St.  
Redlands 92373  
(909) 435-2305  
[www.llkc.org](http://www.llkc.org)

Loma Linda Romanian Church  
26271 Mayberry St.  
Loma Linda 92354  
(909) 796-0881

Loma Linda Spanish Church  
11135 Mountain View Ave.  
Loma Linda 92354  
(909) 558-4992

Loma Linda University Church  
11125 Campus Street  
Loma Linda 92354  
(909) 558-4570  
[www.lluc.org](http://www.lluc.org)

Loma Linda Vietnamese Church  
711 West "C" Street  
Colton 92324  
(888) 901-4747

Mission Road Church  
(formerly Loma Linda Japanese Church)  
27240 Alabama St.  
Redlands 92373  
(909) 335-8369  
[www.missionroadsdachurch.org](http://www.missionroadsdachurch.org)

Victoria Church  
1860 Mountain View Avenue  
Loma Linda 92354  
(909) 796-7869

## SAN BERNARDINO/ COLTON AREAS

All Nations African  
2282 Pumalo St.  
San Bernardino 92346  
(909) 862-8823  
[www.allnationsafricanchurch.com](http://www.allnationsafricanchurch.com)

Arden Hills Church  
5801 Arden Avenue  
Highland 92346  
(909) 864-1111  
[www.ardenhillssda.org](http://www.ardenhillssda.org)

Azure Hills Church  
22633 Barton Road  
Grand Terrace 92313  
(909) 825-8611  
[www.azurehills.org](http://www.azurehills.org)

Colton Church  
1291 North Rancho Avenue  
Colton 92324  
(909) 825-9344  
[www.coltonca.adventistchurch.org](http://www.coltonca.adventistchurch.org)

San Bernardino Community Church  
1696 North G Street  
San Bernardino 92405  
(909)883-2400  
[www.sbcsdachurch.org](http://www.sbcsdachurch.org)

Inland Spanish Church  
710 W. Citrus Street  
Colton, CA 92324  
(909) 824-1585  
[www.inlandspanish22.adventistchurchconnect.org](http://www.inlandspanish22.adventistchurchconnect.org)

San Bernardino 16th St. Church  
1601 W. 16th Street  
San Bernardino 92411  
(909) 888-0084  
[www.one6adventist.org](http://www.one6adventist.org)

San Bernardino Spanish Church  
918 N. Mountain View  
San Bernardino 92410  
(909) 885-6726  
[www.sanbernardinospanshca.adventistchurch.org](http://www.sanbernardinospanshca.adventistchurch.org)

Valley Fellowship  
275 E. Grove Street  
Rialto 92376  
(909) 874-5851  
[www.valleyfellowshipsda.org](http://www.valleyfellowshipsda.org)

Waterman Visayan Filipino Church  
882 S. Waterman Avenue  
San Bernardino 92408  
(909) 384-0233

## RIVERSIDE/CORONA AREAS

Arlington Church  
8778 Magnolia Avenue  
Riverside 92503  
(951) 688-6630  
[www.arlingtonsa.org](http://www.arlingtonsa.org)

Corona Church  
2550 South Main Street  
Corona 92882  
(951) 737-5953  
[www.coronasdachurch.com](http://www.coronasdachurch.com)

La Sierra University Church  
4937 Sierra Vista Avenue  
Riverside 92505  
(951) 354-7095  
[www.lasierra.church](http://www.lasierra.church)

La Sierra Spanish Church  
5885 La Sierra Avenue  
Riverside 92505  
(951) 689-1919  
[www.lasierraspanishchurch.org](http://www.lasierraspanishchurch.org)

Mt. Rubidoux Church  
5320 Victoria Avenue  
Riverside 92506  
(951) 276-8374  
[www.mtrubidouxsa.org](http://www.mtrubidouxsa.org)

Norco Church  
3621 Corona Avenue  
Norco 92860  
(951) 278-8802  
[www.norco.adventistfaith.org](http://www.norco.adventistfaith.org)

Riverside Community Church  
4850 Jurupa Avenue  
Riverside 92504  
(951) 686-1886  
[www.rcfaith.org](http://www.rcfaith.org)

Riverside Kansas Avenue Church  
4491 Kansas Avenue  
Riverside 92507  
(951) 682-9810  
[www.kansasavenue.org](http://www.kansasavenue.org)

Riverside Korean  
2625 Avalon St.  
Riverside 92509  
(951) 359-3742

*\*Visit the Southeastern CA Conference of SDA website at [www.secc.adventistfaith.org](http://www.secc.adventistfaith.org) for more information.*

# Seventh-day Adventist Churches Cont'd

## MORENO VALLEY

Moreno Hills Church  
25873 Alessandro Blvd  
Moreno Valley 92553  
(951) 485-4646  
[www.morenohillssda.org](http://www.morenohillssda.org)

Moreno Valley Church  
12649 Indian Street  
Moreno Valley 92553  
(951) 242-6694  
[www.morenosda.org](http://www.morenosda.org)

## REDLANDS/CALIMESA/ MENTONE AREA

Calimesa Church  
391 Myrtlewood Dr.  
Calimesa 92320  
(909) 795-9741  
[www.calimesasda.com](http://www.calimesasda.com)

Crosswalk  
10421 Corporate Drive  
Redlands 92374  
(909) 796-3000  
[www.crosswalkvillage.com](http://www.crosswalkvillage.com)

Forest Falls Company  
40551 Valley of the Falls Drive  
Forest Falls 92339  
(909) 794-2322  
[www.forestfallssdachurch.org](http://www.forestfallssdachurch.org)

Inland Empire Filipino Church  
604 E. State St.  
Redlands 92374  
(909) 910-6091

Mentone Church  
1230 Olivine Avenue  
Mentone 92359  
(909) 794-1610  
[www.mentonechurch.org](http://www.mentonechurch.org)

Redlands Church  
520 Brookside Avenue  
Redlands 92373  
(909) 793-6337  
[www.redlandschurch.com](http://www.redlandschurch.com)

Thai Church  
10855 New Jersey Street  
Redlands 92373  
[www.thaica.adventist.org](http://www.thaica.adventist.org)

# Other Worship Options

Calvary Chapel of Redlands  
27165 San Bernardino Avenue  
Redlands 92374  
(909) 793-8744  
[www.packinghouseredlands.org](http://www.packinghouseredlands.org)

Centerpoint Church  
170 W. F Street  
Colton 92324  
(909) 825-3670  
[www.centerpointchurch.church](http://www.centerpointchurch.church)

Cornerstone Fellowship Bible Church  
1190 Columbia  
Riverside 92507  
(951) 781-8174  
[www.cornerstonebible.org](http://www.cornerstonebible.org)

Green Valley Christian Church  
11656 Bryant Street  
Yucaipa 92399  
(909) 797-1526  
[www.gvcc4.com](http://www.gvcc4.com)

Paradox Ministries  
*Meets Saturdays, 10:00 a.m.*  
301 Cajon St.  
Redlands 92373  
[www.paradoxredlands.com](http://www.paradoxredlands.com)

Saint Joseph the Worker Catholic Church  
10816 Mountain View Avenue  
Loma Linda 92354  
(909) 796-2605  
[www.stjosephlomalinda.org](http://www.stjosephlomalinda.org)

The Church of Jesus Christ of LDS  
640 S. Center Street  
Redlands 92373  
(909) 335-6627  
[www.lds.org](http://www.lds.org)

The Rock Church & World Outreach Center  
2345 S. Waterman Avenue  
San Bernardino 92408  
(909) 825-8887  
[www.rockchurch.com](http://www.rockchurch.com)

Trinity Evangelical Free Church  
1551 Reservoir Road  
Redlands 92374  
(909) 335-7333  
[www.trinityonline.org](http://www.trinityonline.org)



# SOUTHERN CALIFORNIA



# Getting Away



## Hiking Trails

If you are new to this area, you might think the cities never end. But actually, there are quite a few places not too far away where you can escape the smog or crowds and find peace and quiet. However, you will not be the only one looking for solitude and that creates some challenges. Fortunately, the U.S. Park Service limits the number of hikers and campers by requiring permits and reservations. Buy tickets for campsites in the San Bernardino Mountains at various locations up to eight weeks in advance. During the off-season, the campsites are either closed or filled on a first-come, first-served basis.

You will need to purchase a Forest Adventure Pass (\$5.00/day, or \$30.00/year) to park in the National Forests. The pass is available at any ranger station or at various locations throughout California such as Big 5. A Wilderness Permit is required if you choose to enter any of the 24 special wilderness or primitive areas in the national forests. Some can be obtained by simply going to the ranger station in that area, but go extremely early in the morning if you plan to hike that same day! The permit is free and authorizes the building of campfires (depending on local weather conditions). There are many areas which do not require a permit of any kind, but it is best to check first. For information on the San Bernardino National Forest visit [www.fs.usda.gov/sbnf](http://www.fs.usda.gov/sbnf). To find more local hikes, try visiting [www.Alltrails.com](http://www.Alltrails.com).

**PALM SPRINGS AERIAL TRAMWAY TO ROUND VALLEY:**

This offers fun variety for a backpack or hiking trip. The trails are open from June to October because of heavy snow. This particular trail is only four miles round trip, but you can continue on through numerous campgrounds and make a large loop that will take a few days. From State Highway 111 turn west up Tramway Road. The tram station is two miles up the mountain. From the top tram station, head down to the Long Valley picnic area and from there hike west to Round Valley. The trails are well marked. Listen for the creeks that run all year long, and enjoy the spectacular views. Return the same way. Call ahead to confirm the tram is running: (760) 325-1391. [www.pstramway.com](http://www.pstramway.com).

**SOUTH FORK OF LYTLE CREEK TO BONITA FALLS:**

Idyllic Bonita Falls, a thin, silvery ribbon plunging into a grove of willow, alder, and oak trees, offers a striking example of how a small side stream can be impressive when it becomes a sheet of falling water. Actually there are two falls here—an upper 15-foot drop, then a section of cascades, and finally a 60-foot plunge into a rock-ribbed amphitheater. These falls are but a short walk from Bonita Trailer Camp, just off the Lytle Creek Road. Since most of the trip is boulder-scrambling, wear appropriate shoes. The best time to take this hike is in the spring, soon after a rain when the stream is full and the falls are roaring. From Fontana, drive up Sierra Avenue (which becomes Lytle Creek Road) to its intersection with South Fork Road, 12 miles (1.5 miles past the ranger station). Look for signs for Bonita Trailer Camp. Turn left and drive a quarter mile to the entrance to the private resort. Park outside the gate. Walk through Bonita Camp and up the broad, boulder-strewn canyon of the South Fork. Stay in the middle of the great wash and in less than a half mile you will see the upper part of Bonita Falls in the small canyon on the left.



## Bike Trails

Here are some pointers on Southern California bike trails.  
 (M) = Mountain Bike      (R) = Road Bike

**LOMA LINDA (M):** The hills south of Barton Road are excellent and have miles of trails. People come from all over to ride here. The main access is through Hulda Crooks Park at the south end of Mountain View Avenue.

**ANTELOPE VALLEY (R).** This trail leads to the Mojave Desert and is a good place to get away from the masses. The route takes three to four-and-a-half hours and covers 32 miles. Traffic is light. Start on Main Street in the town of Hesperia, five miles west of I-15. Go east on Main Street, and then curve around and head south on Arrowhead Lake Road. The road will curve and run west toward Highway 138. Just short of the railroad lines, take Summit Valley road north over a small hill. Here the road turns into a well-graded, but nonetheless dirt road for about four miles. This road will lead back to Main Street. Joshua Trees, named by the Mormons, abound here. Plan the trip at the right time of day to avoid the heat.

**BIG BEAR LAKE (R):** Here is a nice two- to three-hour bicycle ride. You'll need to truck your bike to our starting point on Highway 18. Find a safe place to leave your car and begin your circle trip around the lake. Along the road you'll pass the Big Bear Solar Observatory. Here astronomers monitor the ever-changing activity on the surface of our nearest star. Fawnskin is a convenient place to take a food break. A beautiful creek tumbles through the town inviting opportunities for photographs. Total distance around the lake is 17 miles. Road conditions are good, but traffic can be extremely heavy on weekends. <https://www.bigbear.com/>

**IDYLLWILD (R):** This is one of the prettiest of trails. It takes about an hour to do the 6.5 miles, and the traffic is light. From Interstate 10 at Banning, take Highway 243 South. Park, and start biking at the intersection of Highway 243 and North Circle Drive, heading northeast. Turn right at South Circle Drive, and then left on Fern Valley Road. Pedal uphill for about two miles; it's tough, but the view of Tahquitz Rock is worth it. Head back down the hill, but turn left on Rim Rock Road. The road zig-zags to the right at San Jacinto Road. Turn right at John Muir Road, left on South Circle Drive, and then right on Village Center Drive. Relax, enjoy a book, and breathe the fresh air. <http://www.idyllwild.com/>

**LAKE MATTHEWS (R):** This is a fairly long trip. It will take about three hours to do the 24.5-mile route in the Riverside area. The traffic is light, though it gets a bit more crowded on Van Buren Boulevard. Start on Van Buren Boulevard around Highway 91. Travel southeast to Victoria Avenue, then turn right. Pedal through the citrus and pepper trees until you reach La Sierra. Turn left. Pass Lake Matthews, and then turn left on Cajalco Road. Turn left at El Sobrante Road, then right onto Mockingbird Canyon. Return to Van Buren, or turn right on Irving Street. Enjoy the nice view here on a clear day. Turn left on Jackson Street, then right on Van Buren.



# University Realty

Serving our Community since 1954



YOUR REAL ESTATE EXPERTS FOR THE LOMA LINDA AREA



**Scott Stockdale - Owner**



**Michelle Beach**



**Michelle Carreon**



**Mark Cleveland**



**Larry Min**



**Brad Rafuse**

DRE# 794147

**11156 Anderson St., Loma Linda, CA 92354**

**909-796-0156**

**[www.university-realty.com](http://www.university-realty.com)**

**SANTA ANA RIVER TRAIL (SART) (M):** This trail near the town of Angelus Oaks in the San Bernardino National Forest is a really fun ride that is in the epic category. Not to be confused with the Santa Ana River Bike Path, this single-track trail hugs the sides of the mountains and flows through trees, shade, streams, and offers incredible view of the valley below. Go through Redlands and the town of Mentone. Get on the 38 as you head up the hill. When you come into Angelus Oaks look for the Post Office and general store on your left. Park here. Right there is also a Fire Road that will either be called Mill Creek Road or Middle Control Road depending on the time of year. You will be climbing up this fire road at the end of the ride. <https://parks.sbcounty.gov/park/santa-ana-river-trail-pkwy/>. (909) 387-2757

**SANTA ANA RIVER BIKE PATH (R):** This is the area's premier bike path, from the mountains to the ocean. It parallels the Santa Ana River channel starting on Hospitality Lane, San Bernardino or in Corona at the Green River Golf Course entrance, and extends about 28.8 miles to Huntington Beach. The Santa Ana River is often full of water fowl, mostly ducks and egrets. Exit Highway 91 at Green River Road and travel west on Green River Road down a long hill. There is parking on the right side, however, this may not be the safest place to park as break-ins occur frequently. The first section of the trail, from Green River Golf Course to Yorba Linda Regional Park contains the only moderate hills of the largely flat trail. The stretch of path which runs parallel to La Palma Blvd. in Yorba Linda occasionally gets an intense, cold wind off the river. The path descends gently to the beach. In the afternoons there is almost always a moderate to stiff sea breeze. The path ends where the river ends between Huntington Beach and Newport Beach. From this point you can choose to either go toward Huntington and Bolsa Chica or Newport Beach.

For rough riders, the bike path starts at the edge of the Highland mountains of California in San Bernardino, close to the beginning of the Santa Ana river. This is a nice nature ride, with sage forests, birds, reptiles, and insects. The entry point is on a country road called Green Spot. Take Lugonia to Green Spot in San Bernardino. (909) 387-2757. <https://parks.sbcounty.gov/park/santa-ana-river-trail-pkwy/>.

**TURNBULL CANYON-WHITTIER (M):** Take I-10 W to I-605 south. Exit at Beverly Blvd., go east for three miles and park on the side of the road. When you just enter the canyon it turns into Turnbull Canyon Trail. Entrance is on the left. It is five miles to the top by a fire road. Once you reach the top, there are many single track options This a perfect trail for a ride into the sunset.

**WRIGHTWOOD (R):** The tour will take three to four hours and is recommended during the spring or fall when thermometers in the high desert and mountain areas register in the temperate zone. It is particularly nice in the late spring when the wildflowers and desert vegetation are in full bloom. Our starting point is at the store on Highway 138 approximately two miles west of Interstate 15.

Begin by pedaling east on Highway 138. You will pass the Mormon Rocks and then turn right onto Lone Pine Canyon Road to begin a hard, 2,700-foot ascent to Wrightwood. The terrain here, although mountainous, is very dry. About halfway up Lone Pine Road, you'll pass Clyde Ranch. From this point on, the road becomes steeper. Lone Pine Canyon Road will meet Sheep Creek Road, which in turn joins Highway 2 on the east end of town. If you wish to visit the village center, turn left on

Highway 2 and pedal uphill for about a mile. Otherwise turn right on Highway 2 to continue the second half of the ride. It will be a speedy trip down Highway 2, which meets Highway 138. Turn right and coast down to the starting point. Total distance is about 22 miles. Road conditions are good and traffic is light on Lone Pine Road. On the state highways traffic can be moderately heavy, especially on weekends, so watch out! <https://wrightwoodcalifornia.com/>

 **Family Hikes**

**Children's Forest:** The National Children's Forest is a half-mile self-guided and paved trail that's handicapped-accessible. Take Highway 18 to Keller Peak Road east of Running Springs, San Bernardino Mountains. (909) 867-5996. <https://www.fs.usda.gov/detail/sbnf/learning/kids/?cid=STELPRDB5402305>

**Heaps Peak Arboretum:** A 0.7-mile, self-guided trail that winds through the forest, three-quarters of a mile east of the old Santa's Village, off Highway 18 in the San Bernardino Mountains. <https://hparboretum.com/>

**Idyllwild Park Nature Center:** Trails, interpretive exhibits and programs, one mile northwest of Idyllwild on Highway 243 in the San Jacinto Mountains. <https://www.rivcoparks.org/idyllwild-nature-center> (800) 234-7275

**Indian Rock Trail:** Easy half-mile hike that begins immediately east of Rock Camp Station off Highway 173, west of Lake Arrowhead, San Bernardino Mountains.

It's best to call first to make sure the trails are open and in good condition. All visitors are required to display the Adventure Pass in their vehicle when parked on National Forest land for recreation purposes. The Pass is available in two forms: a daily pass for \$5 and an annual pass good for one year from the month of purchase for \$30. Passes are available at Forest Service offices and a variety of local vendors. The closest Forest Service office is the Mill Creek Ranger Station in Mentone, (909)382-2882.

 **Great Views**

**Inspiration Point:** San Gabriel Mountains. This majestic view lies about six miles west of Wrightwood along Highway 2. A turnout near the Grassy Hollow Visitors Center marks the spot.

**Rim of the World:** Take the 215 freeway north to the 30 freeway toward "Mountain Resorts." Exit the 30 at Highway 18, aka Waterman Avenue, and proceed north into the mountains. Go past the Crestline turnoff to Lake Arrowhead. There are many small turnouts along the way where you may safely view the valley below.

**Best Scenic Drive (with a 4x4):** The Mojave Road is an east-west route that enters the Mojave National Preserve near Piute Spring on the east side and on Soda Dry Lake near Zzyzx on the west. Some sections are rough and sandy and four-wheel drive is recommended. Be sure to inquire about road conditions before attempting this route. <https://www.nps.gov/moja/planyourvisit/mojave-road.htm>

**Panorama Point, Redlands:** 10E, Take exit 81 for Ford St, Take the 1st right onto Reservoir Rd, Take the 1st right onto S Wabash Ave, Turn left onto E Sunset Dr. N, Turn left onto Panorama Dr/Panorama Point Dr. Closed from sunset to sunrise.



 **Beach Fun**

There are many great beaches in Southern California. Here are some of the best for swimming, surfing, diving, or just sunbathing

**Huntington Beach (aka: Surf City USA):** There are areas for swimming, picnics, and, of course, surfing. Along Pacific Coast Highway between Golden West and Brookhurst Streets are 8.5 miles of uninterrupted beach all connected by a paved path in the sand. 60.7 miles. <https://www.huntingtonbeachca.gov/>

**Laguna Beach:** Best known for beautiful coves, tide pools, art festivals, and galleries. Parking difficulties aside, this may be Orange County’s premier beach. If the sand is too crowded, head north or south to more secluded bays and coves. Crystal Cove State Park is the best beach for diving anywhere, located just three miles north of downtown Laguna Beach off of the Pacific Coast Highway. Look for the signs for Crystal Cove. Offshore there is a 1,000-acre underwater park. Many tide pools dot the shoreline. There are parking lots on top of the bluff with restrooms, showers, and changing areas. 58.8 miles. <https://www.visitlagunabeach.com/>. (800) 877-1115

**Newport Beach:** Six miles of beach lay along the peninsula between the bay and the ocean. Balboa, Balboa Island, and Corona del Mar are all part of this area. Newport Beach is home to about 9,000 boats docked in the harbor. The Wedge at Newport Beach offers world-class body surfing for the experts! When the weather is rough or there is a storm out at sea the waves will be huge. This is a place for the brave—not the faint of heart—to surf. Take the 55 freeway west until it becomes Balboa Ave. Drive through Costa Mesa and then over the bridge onto Balboa peninsula. Drive through the town of Newport to Newport pier, keep right to the end of the road. 57.6 miles. <https://www.visitnewportbeach.com/>

**Santa Monica Beach:** The beach at Santa Monica is one of the widest and most popular beaches in Los Angeles. Close to two miles long and very wide, this is a great place to sunbathe. There is a bike path directly underneath the pier that goes both north and south for miles. The pier has a restaurant, carousel, shops, and an area for fishing. The sand is clean and the area is good for surfing, windsurfing, and shore fishing. Plenty of restrooms available. You can get to Santa Monica by taking I-10 West. 75.2 miles. <https://www.santamonica.com/things-to-do/santa-monica-beach/> +1 (800) 544-5319

 **National Parks and Preserves**

**Mojave National Preserve**  
Third-largest national preserve in the lower 48 states.  
[www.nps.gov/moja](http://www.nps.gov/moja). (760) 252-6100

**Joshua Tree National Park**  
<https://www.nps.gov/jotr/index.htm>. (760) 367-5500

**San Bernardino National Forest**  
<https://www.fs.usda.gov/sbnf>. +1 (909) 382-2682

**Angeles National Forest**  
<https://www.fs.usda.gov/angeles>. (626) 574-1613

 **Skiing and Snowboarding**

Whatever your style of snow sports, you can find someplace around the Southern California area to practice.

**CROSS COUNTRY —**

Nordic, or cross-country, skiing is one of the fastest growing winter sports in California. It takes less of an initial investment to begin than does downhill, and you can go nearly anywhere there is snow. Equipment can be rented at most downhill ski shops.

**Los Padres National Forest** offers cross-country trails in the Mt. Abel/Mt. Pinos area. Located off the Grapevine, or Interstate 5, above Fraser Park. <https://www.fs.usda.gov/lpnf>. (805) 968-6640

**Inyo National Forest** outside of Mammoth Lakes offers several Nordic ski trails—Devil’s Punchbowl is an excellent example. Located on the west side of Highway 395. <https://www.fs.usda.gov/inyo>. (760) 873-2400

**DOWNHILL —**

**Big Bear Area:**

**Bear Mountain** has 12 lifts with access to 740 skiable acres, and 1,665 ft. of vertical. It has a wide variety of challenging runs. At 8,805 ft. high, Bear Mtn. has the steepest, highest peak in California down to gentle cruising runs. The terrain is 15% beginner, 15% low intermediate, 40% intermediate, 30% advanced. Pipes: two half pipe, one beginner. Jet to the top of the mountain in the hi-speed Big Bear Express in under six minutes. Take route 38. <https://www.bigbearmountainresort.com/> **it** has 16 lifts and one handle-tow lift. Night skiing, cross-country trails, and a scenic sky chair available. Elevation is 7,000 to 8,200 feet. Rentals are available. Ticket sales are limited. Slopes are 10% beginner, 25% low intermediate, 40% intermediate, and 25% advanced. Take Route 18-330. <https://www.bigbearmountainresort.com/> (844)462-2327.

**Snow Valley-Running Springs** has 12 lifts, 240 skiable acres, snowmaking machines, and night skiing. Slopes are 14% beginner, 46% intermediate, 32% advanced, and 7% expert. Take Route 18-330. Information, <https://www.bigbearmountainresort.com/> (844)462-2327

**Angeles National Forest Area:**

**Mountain High-Wrightwood** has 14 chairs and 290 acres of skiable terrain. Elevation is 6,600 to 8,200 feet. They have a snow board park, ski school/rentals and seven food and beverage venues. Night skiing is available. Slopes are 25% beginner, 40% intermediate, 35% advanced. Rentals are available. Take Interstate 15 to Highway 138 and 2. It is located three miles west of Wrightwood. Information, (888) 754-7878. [www.mthigh.com](http://www.mthigh.com)

**Mt. Baldy** has four chair lifts. Elevation is 6,500 to 8,600 feet. Rentals are available. (909) 982-0800. <https://www.mtbaldyresort.com/>

**Inyo National Forest Area:**

**Mammoth Mountain** has two gondolas, two T-bars, a puma, 28 chairs, and 5,000 skiable acres. Elevation is 7,953 to 11,053 feet. Reals and ski school are available. Slopes are 25% beginner, 40% intermediate, 20% advanced, and 15% expert. During vacations, the mountain is swarmed with Southern Californians. Take Highway 395 north for 5-6 hours. Information, (760) 934-2571, or (800) 626-6684. <https://www.mammothmountain.com/>

# Things To Do

0 TO 50 MILES FROM LOMA LINDA—

## REDLANDS AND VICINITY

**ASISTENCIA MISSION de SAN GABRIEL.** 26930 Barton Road at Terracina Boulevard, Redlands. The Asistencia was built in the 1830s and was a branch of the San Gabriel Mission. During the 1840s the buildings were part of a ranch. Now restored, they consist of two museum rooms with exhibits on Native American and early pioneer life in Southern California and a wedding chapel. [www.redlandsconservancy.org/the-asistencia](http://www.redlandsconservancy.org/the-asistencia)

**KIMBERLY CREST HOUSE AND GARDENS:** 1325 Prospect Drive at Highland Avenue, Redlands. Offers a rare glimpse into Southern California's turn-of-the-century "mansion era." This elegant French chateau and its carriage house built in 1897 sit on seven acres surrounded by orange groves. [www.kimberlycrest.org](http://www.kimberlycrest.org)

**LINCOLN MEMORIAL SHRINE.** 125 W. Vine St., behind Smiley Library, Redlands. This is the only museum and library west of the Mississippi River that is dedicated to the nation's 16th president. The Shrine also contains an outstanding collection of Civil War memorabilia. [www.lincolnshrine.com](http://www.lincolnshrine.com).

**MOREY MANSION.** 190 Terracina Blvd., Redlands. Built in 1890 and dubbed "America's favorite Victorian," the mansion has appeared in many movies and advertising campaigns. The mansion is now a private residence. [www.moreymansion.com](http://www.moreymansion.com)

**REDLANDS BOWL.** Eureka and Grant Streets. Each year the Redlands Bowl Summer Music Festival offers a series of free concerts, performed every Tuesday and Friday evening during the months of July and August. Freewill donation. Bring a blanket and a picnic supper. [www.redlandsbowl.org](http://www.redlandsbowl.org)

**SAN BERNARDINO COUNTY MUSEUM.** 2024 Orange Tree Lane, Redlands. The museum features regional anthropology, history, and geology exhibits; an extensive collection of mammals, birds, and eggs; as well as fine arts and special exhibits. [www.museum.sbcounty.gov](http://www.museum.sbcounty.gov).

**UNIVERSITY OF REDLANDS.** 1200 E. Colton Ave., Redlands. A beautiful campus to visit, the university brings special entertainment, theatrical productions, musical performances, art exhibitions, and public affairs programs to the community each year. [www.redlands.edu](http://www.redlands.edu)

## YUCAIPA/OAK GLEN/CHERRY VALLEY

**EDWARD-DEAN MUSEUM & GARDENS.** A collection of 16th-19th century decorative arts, fine furniture, paintings by masters, porcelain, crystal, Persian carpets, Oriental treasures and much more. 9401 Oak Glen Road, Cherry Valley. [www.edward-deanmuseum.org](http://www.edward-deanmuseum.org)

**OAK GLEN.** Oak Glen Road, east of Yucaipa area. The best time to visit this area is in the fall during apple picking season. The mornings and evenings boast clean, clear, crisp air, and when the snow level is low enough, a few inches of snow. There are several picnic spots in the area. [www.oakglen.net](http://www.oakglen.net)

**OAK GLEN PRESERVE AT LOS RIOS RANCHO.** 39610 Oak Glen Rd, Yucaipa. This Wildlands Conservancy 909-acre preserve is located by Southern California's largest historic apple ranch. Visit Montane Botanic Garden and meander through an evergreen forest, a black oak forest, past several ponds and a willow shaded stream. Picnic tables available. <https://wildlandsconservancy.org/preserves/oakglen>

**YUCAIPA ADOBE.** 32183 Kentucky St., Yucaipa. Built in 1859, the Yucaipa Adobe is the oldest standing residential building in the San Bernardino area. <https://museum.sbcounty.gov/yucaipa-adobe/>

## SAN BERNARDINO MOUNTAINS

**ALPINE SLIDE.** Enjoy the 150-foot slide at Big Bear's Magic Mountain Recreation area. One of the few such slides in the USA, the Alpine Slide makes use of ski slopes in the off-season. [www.alpineslidebigbear.com](http://www.alpineslidebigbear.com)

**BIG BEAR DISCOVERY CENTER.** On the north shore of Big Bear Lake in the San Bernardino National Forest. 40971 North Shore Dr. You will see changing seasonal exhibits at this nature center, plus interpretive programs, information about camping, bird watching, hiking, and mountain biking. The center offers nature tours in vans, canoes, kayaks, and on foot. <http://mountainsfoundation.org/big-bear-discovery-center/>

**FOREST FALLS.** A year-round stream feeds a lovely falls. This is a nice place for picnics. Be careful, though, on the trail around the falls; several people are killed each year through carelessness. Highway 38 to Mill Creek Canyon on Valley of Falls Drive. [www.fs.usda.gov/recarea/sbnf/recarea/?recid=26535](http://www.fs.usda.gov/recarea/sbnf/recarea/?recid=26535)

**HOLCOMB VALLEY.** (Dirt road 3N09), Big Bear. A few time-worn buildings and historic sites marked by Forest Service signs remain. Particularly noteworthy are Two-Gun Bill's Saloon, Hangman's Tree, and Pygmy Cabin. Holcomb Valley lies just over the ridge paralleling Big Bear Lake to the north. Holcomb Valley Road, a graded dirt road, leads in from State Route 38 about two miles east of Pawnskin. A guide is available at the Big Bear Discovery Center on the north shore of the lake.

**LAKE ARROWHEAD VILLAGE.** 28200 Hwy. 189, Lake Arrowhead. A vacation retreat from city noise! Water skiing, boating, fishing, and lakeside dining available along with more than 50 shops and outlet stores. [www.thelakearrowheadvillage.com](http://www.thelakearrowheadvillage.com)

**BIG BEAR ALPINE ZOO AT MOONRIDGE.** 42801 Moonridge Rd, Big Bear. Keeps injured or orphaned wildlife. Animals who can survive in the wild after rehabilitation are returned to the wild. Among the animals are black bears, bobcats, mountain lions, and timber wolves. [www.bigbearzoo.org](http://www.bigbearzoo.org)

**RIM OF THE WORLD NATIONAL SCENIC BYWAY.** You will see some of the most beautiful natural sights in California. Forests, deserts, and mountain passes up to 8,000 ft. await you. Start on Hwy. 138 at Cajon Junction, turn right onto Hwy. 18 and proceed to Crestline, then take Hwy. 38 north to Big Bear Lake. The trip is about a 107-mile drive and should take you about 3.5 hours. Pick up a brochure at any local ranger station. <https://www.fs.usda.gov/recarea/sbnf/recarea/?recid=74122>

## RIVERSIDE AND VICINITY

**DIAMOND VALLEY LAKE/VISITOR'S CENTER.** At 4.5 miles long and 2 miles wide, Diamond Valley Lake is So. California's largest freshwater reservoir. The lake supplies water needs of homes and industries, plus recreational and outdoor activities. The Visitor's Center is located at State St. & Newport Rd. in Hemet. <https://www.dvmarina.com/>

**MARCH FIELD AIR MUSEUM.** Drive south on I-215/Van Buren Blvd. at March Air Reserve Base. Features 1918-to-the-present military aviation relics, engines and trainers. [www.marchfield.org](http://www.marchfield.org)

**MISSION INN.** Get a taste of history at Riverside's famous Inn at 3696 Mission Inn Avenue. It is a unique, historical, mission-style hotel with collections of Spanish antiques, paintings, historical objects, 900 bells, crosses, and international dolls. [www.missioninn.com](http://www.missioninn.com)

**MOUNT RUBIDOUX** in Riverside, rises 1,337 feet above sea level adjacent to the beautiful Santa Ana River at the city's west edge. On the summit are the Father Serra Cross and the World Peace Tower. The summit road, which begins at 9th St. & Mount Rubidoux Dr., is a walking trail that leads to the top. If you're an early riser on Easter morning, you may want to attend the Easter sunrise services. [www.riversideeasterservice.com/when-how](http://www.riversideeasterservice.com/when-how)

**UCR BOTANIC GARDENS** on the east side of UCR campus off N. Campus Circle Dr. This 40-acre garden features over 3,500 plant species. The garden is at its finest in spring when many of the tropical plants are in bloom. [www.gardens.ucr.edu](http://www.gardens.ucr.edu)

**UCR/CALIFORNIA MUSEUM OF PHOTOGRAPHY.** 3824 Main St., Riverside. Displays photographs, cameras, and related equipment. Many of the cameras on display date back to the invention of photography. [www.ucrarts.ucr.edu](http://www.ucrarts.ucr.edu)

## ORANGE COUNTY

**CHRIST CATHEDRAL (formerly Crystal Cathedral)** 13280 Chapman Ave. at Lewis St., Garden Grove, is an all-glass sanctuary enclosed by 10,000 mirrored windows. The tower of the cathedral contains a 52-bell carillon. [www.christcathedralcalifornia.org](http://www.christcathedralcalifornia.org)

**DISNEYLAND® RESORT.** 1313 Harbor Blvd., Anaheim, just off Interstate 5. Besides Disneyland®, you will also find Disney's California Adventure Park right next door, plus Downtown Disney® offering shopping, dining, and entertainment. [www.disneyland.com](http://www.disneyland.com)

**KNOTT'S BERRY FARM THEME PARK** experience the atmosphere of the old west with five theme areas. In addition to rides, you will find a full-size reproduction of Independence Hall, and Good Time Theatre where major entertainers perform. The park is located at 8039 Beach Blvd., Buena Park. [www.knotts.com](http://www.knotts.com)

**RICHARD M. NIXON PRESIDENTIAL LIBRARY.** 18001 Yorba Linda Blvd., Yorba Linda. Take 91 West to Imperial Hwy. Go north 3 miles, left on Yorba Linda Blvd. You can see Nixon's birthplace and gravesite, along with library, gardens, and special exhibits. Newly renovated. [www.nixonfoundation.org](http://www.nixonfoundation.org)

**TIDE POOLS.** Laguna Beach. Walk along the beach at Laguna and turn over a few rocks in the pools of water. You'll be surprised at what you might find. [www.californiabeaches.com/map/laguna-beach-tide-pools](http://www.californiabeaches.com/map/laguna-beach-tide-pools)

50 TO 100 MILES FROM LOMA LINDA—

## PALM SPRINGS AND DESERT AREAS

**AGUA CALIENTE INDIAN CANYONS.** On S. Palm Canyon Dr. is a huge scenic area that includes hiking trails and picnic areas set aside for visitors by the Agua Caliente Band of Indians. [https://www.indian-canyons.com/indian\\_canyons](https://www.indian-canyons.com/indian_canyons)

**CALICO GHOST TOWN.** Located 11 miles on I-15 from Barstow. Occupied between 1881 and 1896, Calico, named after the varicolored surrounding mountains, was a booming silver mining town of more than 4,000 people. [www.calicotown.com](http://www.calicotown.com)

**JOSHUA TREE NATIONAL PARK.** Take I-10 toward Indio, follow directions, and you'll find Joshua Tree. The national park is home to 261 species of resident and migratory birds and many animals including the desert bighorn. Best time to visit is spring, winter, or fall. Summer can be beastly hot. Camping is allowed in specified areas. Cottonwood Springs at Joshua Tree National Park is a good place to spend a quiet afternoon or a weekend of camping. From the base camp you can take a four-mile hike to Lost Palms Canyon out in the middle of nowhere. The walk is fairly easy and can be done in about four hours round trip. Check a Riverside County map for exact location (take plenty of water and safety essentials). Entrance fee/car to enter. [www.nps.gov/jotr](http://www.nps.gov/jotr)

**THE LIVING DESERT ZOO & GARDENS.** 1.5 miles south off SR 111 at 47900 Portola Ave., Palm Desert, is a 1,200-acre wildlife and botanical park with native and exotic animals, gardens, scenic hiking trails, live animal shows, and American Indian culture exhibits. Picnic areas are available. [www.livingdesert.org](http://www.livingdesert.org)

**PALM SPRINGS AERIAL TRAMWAY.** Cool off at the top where it's 40 degrees cooler than at the bottom. The tram, located 3 miles north of Palm Springs on SR 111 and 4 miles west on Tramway Road, transports passengers 2.5 miles from Valley Station (elevation 2,642 feet) to Mountain Station (elevation 8,516 feet) at the east edge of Long Valley in the world's largest rotating tram cars. This route affords spectacular 360-degree views and access to the rugged San Jacinto Mountain region. [www.pstramway.com](http://www.pstramway.com)

**WILDFLOWERS ANTELOPE VALLEY.** Outside of Lancaster. If the winter has been rainy, the wildflowers will be in abundance in the Antelope Valley in the spring. It is best to check with the Lancaster Chamber of Commerce around March or April for good flower-viewing times. [www.avchamber.org](http://www.avchamber.org)

## GREATER LOS ANGELES

**AUTRY NATIONAL CENTER.** 4700 Western Heritage Way, in Griffith Park, just west of I-5. Presents the history of America's westward movement through art, artifacts, and AV materials, and how it was depicted on the big and small screens. [www.autry-museum.org](http://www.autry-museum.org)

**THE BRADBURY BUILDING.** 304 S. Broadway, downtown Los Angeles. Through an inauspicious doorway in the heart of a bustling area, you can step into a refreshing turn-of-the-century building that was designed in 1893. Open elevators, ornate iron grillwork, and a glass roof set off the still-used office building. [www.laconservancy.org/learn/historic-places/bradbury-building/](http://www.laconservancy.org/learn/historic-places/bradbury-building/)

**CABRILLO MARINE AQUARIUM.** 3720 Stephen White Drive, San Pedro. A fascinating showcase for thousands of Pacific Ocean specimens and fossils, a replica of a 1,100-pound turtle, nautical instruments, ship models, and a facsimile of a captain's cabin in a sailing vessel. [www.cabrillomarineaquarium.org](http://www.cabrillomarineaquarium.org)

**CALIFORNIA BOTANIC GARDENS.** 1500 N. College Avenue, Claremont. The 86-acre garden contains an excellent collection of native California plants and flowers and is most colorful between February and May. [www.calbg.org](http://www.calbg.org)

**CALIFORNIA SCIENCE CENTER.** 700 State Drive, Los Angeles. Hundreds of hands-on exhibits about life sciences, human innovation, powered flight and the environment, including the Space Shuttle Endeavour. The Aerospace Complex contains an IMAX Theater. <https://californiasciencecenter.org/>

**CENTRAL LIBRARY.** 630 W. 5th Street between Grand Avenue and Flower Street, Los Angeles. The library has more than 2.1 million books and is adorned with sculpture, murals, and frescoes. The California reference room is outstanding. [www.lapl.org](http://www.lapl.org)

**CHINATOWN** is bordered by Cesar Chavez, Spring, Yale and Bernard Streets. Chinese shops and restaurants line streets off Gin Ling Way, the "Street of the Golden Treasures." Chinese festivals and processions are held here. [www.oldchinatownla.com](http://www.oldchinatownla.com)

**CITY HALL.** 200 N. Spring Street, downtown Los Angeles. The tower and observation deck is 454 feet high. <https://lacity.gov/>

**DESCANSO GARDENS.** 1418 Descanso Drive, La Cañada. 160-acre botanic garden with 30,000 camellias from throughout the world. Roses, begonias, fuschias, and summer annuals bloom April through December. [www.descansogardens.org](http://www.descansogardens.org)

**EL PUEBLO DE LOS ANGELES STATE HISTORIC MONUMENT.** 44 acres, bordered by Alameda, Arcadia, Spring, and Chavez Ave. This is the oldest section of LA close to the site of the pueblo where Los Angeles was established in 1781. The ethnic background and heritage of the diverse groups who settled here and contributed to the city's development are evident. Free guided walking tours originating at the visitor center past restored historical landmarks, are available. [www.elpueblo.lacity.gov](http://www.elpueblo.lacity.gov)

**EXPO PARK ROSE GARDEN** Bordered by Figueroa St., Exposition Blvd., Vermont Avenue, and Martin Luther King Jr. Blvd., is a civic, cultural and recreational center. You will see a seven-acre sunken rose garden in the park where 20,000 specimens of 190 varieties are cultivated. <https://www.laparks.org/park/exposition-rose-garden>

**FARMERS MARKET.** 3rd St. and Fairfax Ave., Los Angeles. LA's oldest market offers over 100 stores with food and gift shops. The outdoor cafes are popular. Right next door is the Grove with upscale shops, restaurants, and theaters. [www.farmersmarketla.com](http://www.farmersmarketla.com)

**GETTY CENTER.** 1200 Getty Center Drive, Los Angeles. Take the 405 Freeway to Getty Center Drive. The Getty Center houses pre-20th-century European paintings, sculpture, decorative arts, etc. [www.getty.edu](http://www.getty.edu)

**GETTY VILLA.** 17985 Pacific Coast Hwy, Pacific Palisades. This recreation of a first-century AD Roman villa houses an educational center and museum dedicated to the study of the arts and cultures of ancient Greece, Rome, and Etruria. [www.getty.edu](http://www.getty.edu)

**GLENDALE FOREST LAWN MEMORIAL PARK,** 1712 S. Glendale Avenue, Glendale. The park of 300 acres includes a large collection of white Carrara marble statuary. Perhaps the most famous attraction is the stained glass recreation of Leonardo da Vinci's "The Last Supper" and one of the world's largest religious oil painting, Jan Styka's 45x195-foot "Crucifixion." The Forest Lawn Museum displays an exact reproduction of Ghiberti's "Paradise Doors." [www.forestlawn.com](http://www.forestlawn.com)

**GRIFFITH OBSERVATORY AND PLANETARIUM.** Griffith Park, Los Angeles. National leader in public astronomy and an icon of LA, features state-of-the-art projection technology. [www.griffithobservatory.org](http://www.griffithobservatory.org)

**HOLLYWOOD BOWL** is situated in a natural amphitheater in the foothills off Highland Ave. just west of Cahuenga Blvd. Seating 18,000, the bowl offers concerts by the Los Angeles Philharmonic and the Hollywood Bowl Orchestra. [www.hollywoodbowl.org](http://www.hollywoodbowl.org)

**HUNTINGTON LIBRARY, ART COLLECTIONS, AND BOTANICAL GARDENS.** 1151 Oxford Road, San Marino, houses one of the world's great collections of rare books and manuscripts including the Gutenberg Bible, the Ellesmere Chaucer, and Benjamin Franklin's "Autobiography" in his own handwriting. The historic Huntington Art Gallery, housed in the Beaux Arts Mansion built in 1910, offers one of the finest collections of European art in the nation, along with California's first classical Chinese garden, and a Japanese garden. [www.huntington.org](http://www.huntington.org)

**LA BREA TAR PITS.** Wilshire Blvd. and Curson Avenue, Los Angeles. This is one of the richest sources of pre-flood fossils. These sticky asphalt beds entrapped prehistoric plant and animal life. [www.tarpits.org](http://www.tarpits.org)

**LITTLE TOKYO**, bordered by First, Alameda, 3rd and Los Angeles Streets, is the social, cultural and economic area of Southern California's Japanese community. Three shopping centers contain numerous restaurants and shops. [www.visitlittletokyo.com](http://www.visitlittletokyo.com)

**LONG BEACH AQUARIUM OF THE PACIFIC**. Off of Shoreline Dr. at 100 Aquarium Way. Meet over 500 of the Pacific's inhabitants in 19 major habitats and 50 personalized focus exhibits. [www.aquariumofpacific.org](http://www.aquariumofpacific.org)

**LOS ANGELES COUNTY ARBORETUM BOTANIC GARDEN**. 301 N. Baldwin Avenue, Arcadia. This horticulture research center is composed of 127 acres of trees and shrubs, and orchid and begonia greenhouses, a reference library, bird sanctuary, and a small natural lake. [www.arboretum.org](http://www.arboretum.org)

**LOS ANGELES COUNTY MUSEUM OF ART**. 5905 Wilshire Boulevard, Los Angeles. Six structures surrounded by a sculpture garden, with paintings, sculpture, costumes, textiles, and decorative art from around the world. You will see art from ancient to current times. [www.lacma.org](http://www.lacma.org)

**LOS ANGELES MUNICIPAL ART GALLERY**. 4804 Hollywood Boulevard in Barnsdall Park, Los Angeles. Contemporary art is featured at this gallery, which is the site of the annual city outdoor art festival. Includes an exhibition about the nearby Hollyhock House, one of Frank Lloyd Wright's finest works. <https://www.lacma.org/>

**LOS ANGELES ZOO & BOTANICAL GARDENS**. For animal lovers of all ages. Located near the junction of the I-5 and SR 134 Freeways. 133 acres of landscaped hilly terrain. Five continental areas provide a natural setting for over 2,100 mammals, birds, and reptiles. The Children's Zoo features an animal nursery and petting yard. [www.lazoo.org](http://www.lazoo.org)

**MUSEUM OF TOLERANCE**. 9786 W. Pico Blvd., has interactive exhibits about racism and prejudice in America. You will see the history of the Holocaust depicted. A learning center allows additional research. [www.museumoftolerance.com](http://www.museumoftolerance.com)

**THE MUSIC CENTER**. 135 N. Grand Avenue, downtown Los Angeles. An hour-long guided tour will take you through the four buildings which make up the Music Center complex. Includes Walt Disney Concert Hall. [www.musiccenter.org](http://www.musiccenter.org)

**NATURAL HISTORY MUSEUM OF LOS ANGELES COUNTY**. 900 Exposition Boulevard, Los Angeles. The museum features exotic mammals, detailed habitats of Africa and North America, as well as displays on California and western history. In summer, walk through hundreds of butterflies flying free in the Pavilion of Wings. [www.nhm.org](http://www.nhm.org)

**NORTON SIMON MUSEUM**. 411 W. Colorado Blvd., at Orange Grove Blvd., Pasadena. Exhibits include art from the early Renaissance through the mid-20th century, with works by Monet, Renoir, and Van Gogh. [www.nortonsimon.org](http://www.nortonsimon.org)

**OLVERA STREET**. Between North Main and Alameda Streets in Los Angeles. One of the oldest streets in Los Angeles, Olvera Street has been restored to its original appearance. Las Posadras, the Christmas celebration held in late December, is held here annually. [www.olvera-street.com](http://www.olvera-street.com)

**PAGE MUSEUM AT THE LA BREA TAR PITS**. 5801 Wilshire Boulevard, Los Angeles. Erected on the site of the Brea Tar Pits, the Page Museum houses reconstructed fossil skeletons of animals once trapped in the tar. A major exhibit is the 12-foot-high Imperial Mammoth. A paleontologic laboratory operates in the museum, and visitors may view the actual work being done with fossils. [www.tarpits.org](http://www.tarpits.org)

**QUEEN MARY**. 1126 Queens Hwy, Long Beach. Luxury liner moored in Long Beach Harbor. Delve into the ship's expansive past, including her groundbreaking construction, her time as a troopship during WWII and of course, her glory days as the world's most luxurious and technologically advanced ocean liner. Tours. [www.queenmary.com](http://www.queenmary.com)

**SOUTH COAST BOTANIC GARDENS**. 26300 Crenshaw Blvd., Palos Verdes Peninsula. The South Coast Botanic Garden is a 87 acres botanical garden in the Palos Verdes Hills, in an unincorporated area of Los Angeles County, California, United States, about 10 miles south of Los Angeles International Airport. It has over 150,000 landscaped plants and trees from approximately 140 families, 700 genera, and 2,000 different species. <https://southcoastbotanicgarden.org/>

**TCL CHINESE THEATER**. 6925 Hollywood Blvd., Hollywood. The handprints and footprints of many past and present stars are imprinted in the concrete of the courtyard in front of the theater. [www.tclchinese-theatres.com](http://www.tclchinese-theatres.com)

**THE BROAD**. 221 S. Grand Ave, Los Angeles. Contemporary art museum displaying close to 2000 works of art. [www.thebroad.org](http://www.thebroad.org)

**TELEVISION SHOWS/STUDIOS**. Major broadcasting companies offer many studio audience shows and tours. Ticket requests should be made well in advance; some shows have waiting lists several months long. (260) 424-1064

**TRAVELTOWN MUSEUM**. Griffith Park, Los Angeles. This museum features various types of transportation devices from different eras. Included are railroad engines, streetcars, a World War II Japanese plane, and assorted fire engines. Numerous trains are exhibited outdoors and visitors are invited to explore the interiors. [www.traveltown.org](http://www.traveltown.org)

**UNIVERSITY OF CALIFORNIA, LOS ANGELES (UCLA)**. 405 Hilgard Ave., covers 419 acres in the foothills of the Santa Monica Mountains. Relocated here in 1929, the university has several major complexes, including a large medical center and enrolls approximately 40,000 students each year. The UCLA School of Arts and Architecture offers a variety of public events. [www.ucla.edu](http://www.ucla.edu)

**UNIVERSAL STUDIOS HOLLYWOOD**. Universal Studios Hollywood is a film studio and theme park in the San Fernando Valley area of Los Angeles County, California. <https://www.universalstudioshollywood.com/web/en/us>

**WILL ROGERS STATE HISTORIC PARK**, at 1501 Will Rogers State Park Rd. in Pacific Palisades. Visit the humorist's home as well as hiking trails and picnic facilities. [www.parks.ca.gov](http://www.parks.ca.gov)

## SAN DIEGO COUNTY

**BALBOA PARK**. The 200-foot California Tower soars above the 15 museums, gardens and recreation areas that make up this 1,200-acre park at the edge of the city's business district. [www.balboapark.org](http://www.balboapark.org)

**BIRCH AQUARIUM AT SCRIPPS INSTITUTE OF OCEANOGRAPHY**. 2300 Expedition Way, La Jolla, located on hillside overlooking the Scripps Institution of Oceanography at the University of California at San Diego. The aquarium features marine animals from the Pacific Ocean. [www.aquarium.ucsd.edu](http://www.aquarium.ucsd.edu)

**CABRILLO NATIONAL MONUMENT**. At the south end of Cabrillo Memorial Dr. (SR 209) on Point Loma. You will see wonderful views of the Pacific from this monument. [www.nps.gov/cabr/index.htm](http://www.nps.gov/cabr/index.htm)

**MARITIME MUSEUM OF SAN DIEGO**. On the Embarcadero at 1492 N. Harbor Dr. Nautical exhibits featured aboard three historic ships—a windjammer, a ferry, and a yacht. [www.sdmaritime.org](http://www.sdmaritime.org)

**MISSION SAN JUAN CAPISTRANO**. Two blocks off the SR 74/I-5 Jct., San Juan Capistrano, founded by Father Junipero Serra. The mission is most famous for the swallows that arrive mid-March and leave mid-October. [www.missionsjc.com](http://www.missionsjc.com)

**OLD TOWN SAN DIEGO**. Just north of downtown is a California settlement depicting the Mexican and American years of 1821–1872 with historic buildings and adobe homes. [www.oldtownsandiego.org](http://www.oldtownsandiego.org)

**PALOMAR OBSERVATORY**. Palomar Mountain, San Diego County. Made up of of four domes; the largest houses the 200-inch Hale Telescope, which is used to study distant celestial bodies. [www.astro.caltech.edu/palomar/](http://www.astro.caltech.edu/palomar/)

**REUBEN H. FLEET SPACETHEATER AND SCIENCE CENTER**, 1875 El Prado, Balboa Park, San Diego, houses the world's first giant IMAX dome screen with films and astronomy programs. The Science Center is a hands-on museum with a variety of exhibits. [www.rhfleet.org](http://www.rhfleet.org)

**SAN CLEMENTE BEACHES**. While the Los Angeles and northern Orange County beaches are teeming with people on most afternoons, several of San Clemente's beach areas are less inhabited. San Clemente is a mere 20 minutes south of Laguna Beach on Pacific Coast Highway. <https://www.san-clemente.org/departments-services/beaches-parks-recreation-services/beaches>

**SAN DIEGO ZOO SAFARI PARK** is located just south of Escondido about 5 miles east of I-15, Rancho Parkway Exit. Home to more than 3,500 animals, most roam freely on land simulating their natural habitat. The 1,800-acre wildlife preserve features a 5-mile monorail tour of the main park. [www.sdzsafaripark.org/safaris](http://www.sdzsafaripark.org/safaris)

**SAN DIEGO ZOO**. One of the largest and best zoos anywhere, with some of the rarest creatures. The animals live in enclosures similar to their natural environment. Be sure to take along a telephoto lens. The zoo is located in north San Diego off Interstate 15. [www.sandiegozoo.org](http://www.sandiegozoo.org)

**SEAWORLD**. On Mission Bay's south shore in San Diego is a 189-acre marine adventure park with shows, aquariums, marine-life attractions, rides, and marina. You'll see dolphins, sea lions, otters, and walrus performing. [www.seaworld.com](http://www.seaworld.com)

**USS MIDWAY MUSEUM**. 910 N. Harbor Dr. downtown at Navy Pier. The Midway was the longest serving carrier in U.S. Navy history and the largest ship in the world for 10 years. Over 60 exhibits including the engine room and captain's bridge are open, and more than 25 restored aircraft, from WWII to Desert Storm, are on display. [www.midway.org](http://www.midway.org)

## OVER 100 MILES—

**ANZA-BORREGO DESERT STATE PARK**. Located outside Borrego Springs. The park consists of 600,000 acres on the Colorado Desert. Native flora and fauna abound. Camping is allowed in specific areas. A visitor center houses exhibits on weather, geology, history, desert plants, and wildlife. [www.parks.ca.gov/anzaborrego](http://www.parks.ca.gov/anzaborrego)

**CATALINA ISLAND**. Just 22 miles off the California coast, this resort island offers all sorts of opportunities for outdoor fun including boating and hiking. Passenger boats leave daily from Long Beach, Dana Point, or San Pedro. [www.catalinachamber.com](http://www.catalinachamber.com)

**RONALD REAGAN PRESIDENTIAL LIBRARY AND MUSEUM**. The museum houses photos and memorabilia of President Reagan's life. Included is a full-scale replica of the Oval Office and a section of the Berlin Wall. In the Air Force One Pavilion, you may walk through the cockpit, President and Nancy Reagan's quarters, the "cabinet" room, galleys, etc., of the retired Air Force One, a Boeing 707, that flew seven presidents. 40 Presidential Dr., Simi Valley. [www.reaganlibrary.com](http://www.reaganlibrary.com)

**SIX FLAGS MAGIC MOUNTAIN AND WATER PARK**. West of I-5 Magic Mountain Pkwy. in Valencia. This entertainment park has more than 100 rides (19 rollercoasters), shows, and attractions. [www.sixflags.com](http://www.sixflags.com)

**BIRDING**. For recent sightings of local and Southern California birds and upcoming field trips, arranged by the Cornell Lab of Ornithology. [www.ebird.org](http://www.ebird.org)

 **Musical Performances**

**LOCAL MUSICAL & THEATER OPPORTUNITIES**

**Ticket Information**

California Theatre of Performing Arts, San Bernardino, (909) 885-8263. [www.californiatheatre.net](http://www.californiatheatre.net)

Calimesa Community Concert Series, Calimesa Seventh-day Adventist Church, (909) 795-4960

Fox Performing Arts Center, Riverside, (951) 779-9800 [www.riversidelive.com](http://www.riversidelive.com)

Legendary Productions, Redlands, (909) 353-1425 [www.legendaryproductionsco.com](http://www.legendaryproductionsco.com)

LifeHouse Productions, Redlands, (909) 335-3037 [www.lifehousetheater.com](http://www.lifehousetheater.com)

Redlands Bowl Concerts (free of charge Tuesday and Friday evenings during the summer), (909) 793-7316 [www.redlandsbowl.org](http://www.redlandsbowl.org)

Redlands Symphony Orchestra, (909) 587-5565 [www.redlandssymphony.com](http://www.redlandssymphony.com)

Riverside Philharmonic, (877) 744-5849 [www.riversidephilharmonic.org](http://www.riversidephilharmonic.org)

San Bernardino Symphony Association, (909) 381-5388 [www.sanbernardinosymphony.org](http://www.sanbernardinosymphony.org)

Victoria Gardens Cultural Center and Lewis Family Playhouse Rancho Cucamonga (909) 477-2752, [www.cityofrc.us/vgcc](http://www.cityofrc.us/vgcc)

**LOS ANGELES AREA MUSICAL OPPORTUNITIES**

**Ticket Information**

Greek Theatre, (323) 665-1927. [www.greektheatrela.com](http://www.greektheatrela.com)

Hollywood Bowl, (323) 850-2000. [www.hollywoodbowl.org](http://www.hollywoodbowl.org)

LA County Music Center, (213) 972-7211. [www.musiccenter.org](http://www.musiccenter.org)

Peacock Theater, (213) 763-6020. [peacocktheater.com](http://peacocktheater.com)

Segerstrom Center for the Arts, Costa Mesa, (714) 556-2787. [www.scfta.org](http://www.scfta.org)

Pacific Amphitheater, (714) 708-1500. [www.pacamp.com](http://www.pacamp.com)

Rose Bowl, Pasadena, (626) 577-3100. [www.rosebowlstadium.com](http://www.rosebowlstadium.com)

**PALM SPRINGS AREA MUSICAL OPPORTUNITIES**

Annenberg Theater, (619) 325-4490. [www.psmuseum.org/events/venue/annenberg-theater](http://www.psmuseum.org/events/venue/annenberg-theater)

McCallum Theatre for the Performing Arts, (619) 340-2787 [www.mccallumtheatre.com](http://www.mccallumtheatre.com)

**The CPA**  
**For Health Care Professionals**  
**in the Inland Empire**  
**For Over 35 Years**  
*Specializing in Tax Planning and Preparation*

 **E Eugene Platt & Associates CPA's**  
 CERTIFIED PUBLIC ACCOUNTANTS

222 E Olive Ave # 4, Redlands, CA 92373  
**(909) 307-1753**

# Alumni Association Online Information

Create your profile on our website [www.llusmaa.org](http://www.llusmaa.org) and receive access to the following:

- Comprehensive online LLU medical alumni database with maps
- Alumni help
- Mentorship
- Resume and application reviews
- Senior host program
- Mission reimbursement details
- Event details
- Photos

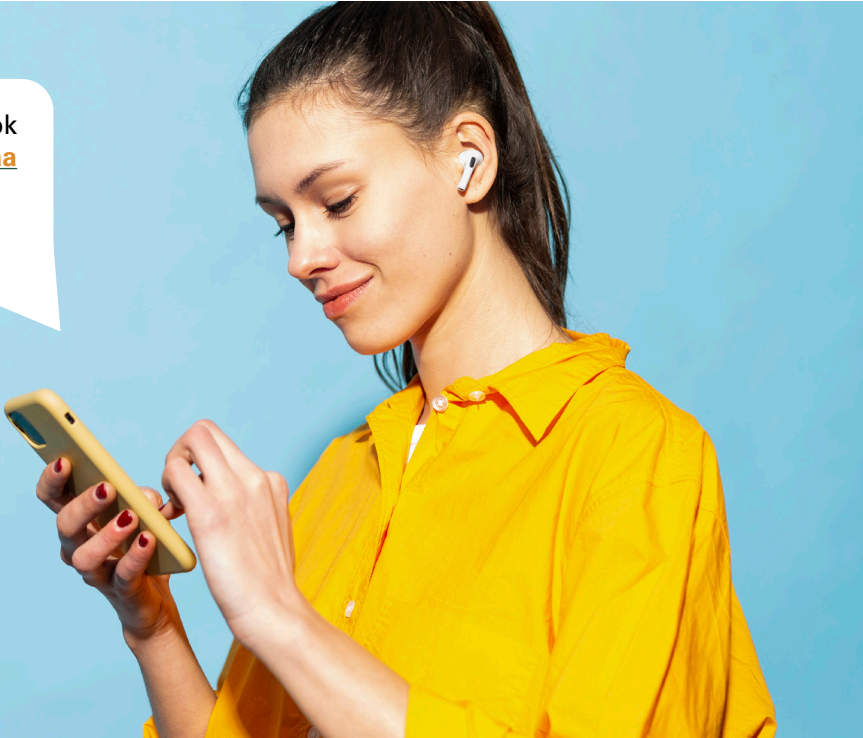
[www.llusmaa.org](http://www.llusmaa.org)



## Social Media

 Follow us on Facebook  
[facebook.com/llusmaa](https://facebook.com/llusmaa)

 Add us on Instagram  
[@llusmaa](https://www.instagram.com/llusmaa)





# Credits

**Alumni Association, School of  
Medicine of Loma Linda University**

**President**  
Marilene Wang '86

**President-elect**  
Barbara McKinney '88

**Chief Financial Officer**  
Joseph Verska '87

**Assistant Financial Officer**  
Thomas Hamilton '73-A

**Secretary/Spiritual VP**  
David Creamer '04

**Past President**  
Steven Herber '86

**Chair, Student Affairs**  
Gina Mohr '96

**Chair, Media Advisory**  
Jenny Jaque '04

**Student Affairs Council  
Alumni Association, LLUSM**

Gina Mohr '96, Chair  
Marilene Wang '86  
Barbara McKinney '88

Merle Hildebrand  
*President, Auxiliary*

Jayde Frederick '26  
Hannah Sloan '26  
*HNP Co-Directors*  
Emmauelle Issa '25  
*President, SM Senate*

Alexis Townsend '25\*  
Henry Hongo '26\*  
Erwin Stuffle '27\*  
Calvin Chuang  
Carolyn Wieder

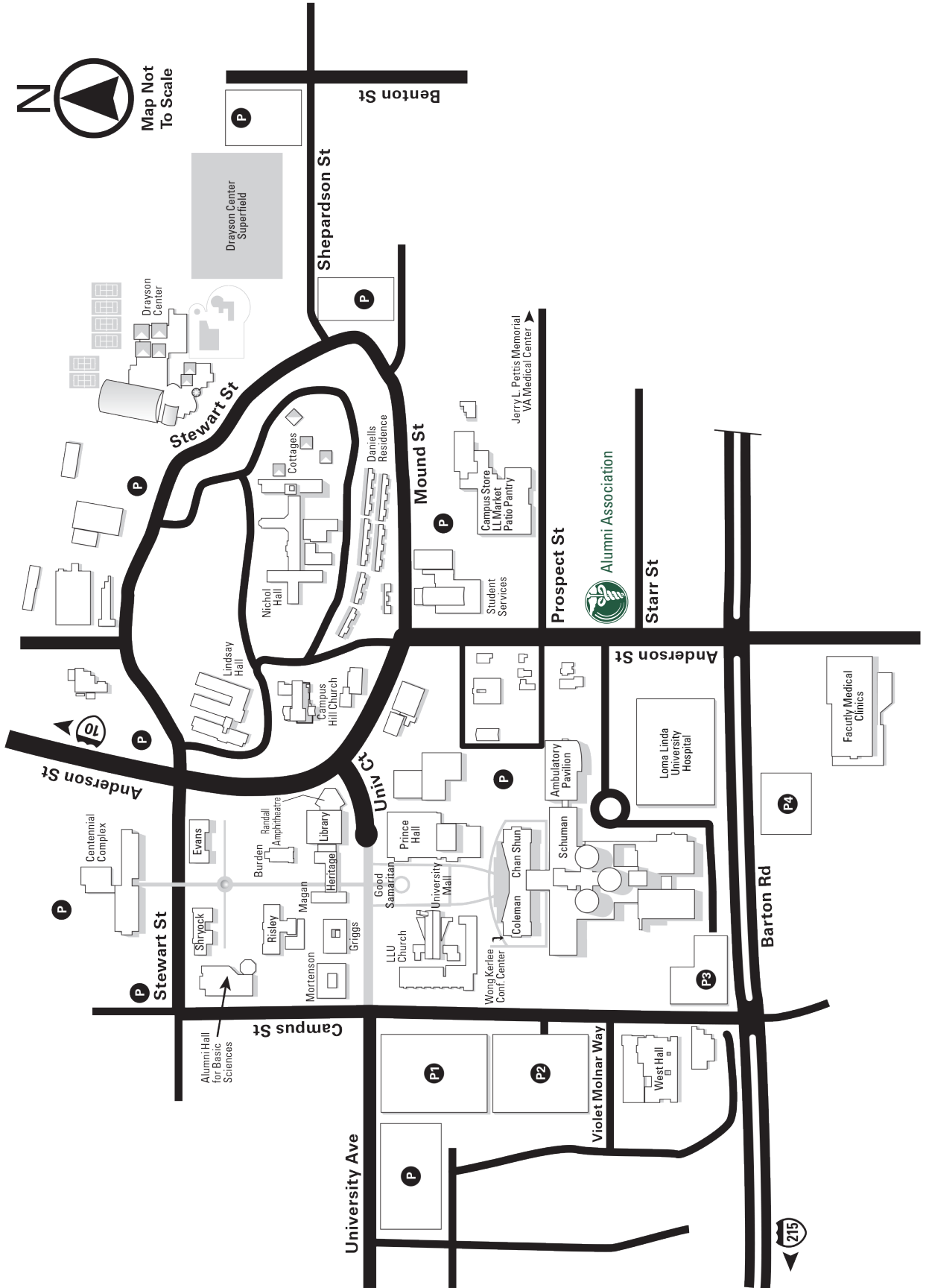
\* *Student Representative*

**Alumni Association, SMLLU  
11245 Anderson Street, Suite 200  
Loma Linda, CA 92354**

Telephone 909-558-4633 (ext. 44633), Fax 909-558-4638  
Email: llusmaa@llu.edu  
Website: www.llusmaa.org

**Alumni Association Staff**

Calvin Chuang, MBA, MSML, Executive Director .....	X	4 7 1 9 0
Jonathan Davidson, MFA, Media Producer.....	X	4 7 1 9 2
Sue Kunz, BS, Business Manager.....	X	4 7 1 8 6
Chaltu Sandiford, BA, Alumni Relations & Events Manager .....	X	4 7 1 8 7
Danelle Taylor Johnston, MA, ALUMNI JOURNAL, Managing Editor .....	X	4 7 4 1 8
Carolyn Wieder, MAT, Student Affairs Coordinator .....	X	1 5 3 0 3
Nancy Yuen, MPW, Administrative & Communication Specialist .....	X	4 4 6 3 3





ALUMNI ASSOCIATION  
School of Medicine  
Loma Linda University

Established 1915 | Incorporated 1932  
11245 Anderson Street, Suite 200, Loma Linda, CA 92354  
909-558-4633 | Fax: 909-558-4638  
[llusmaa@llu.edu](mailto:llusmaa@llu.edu) | [www.llusmaa.org](http://www.llusmaa.org)